

## 2<sup>nd</sup> quarter 2012

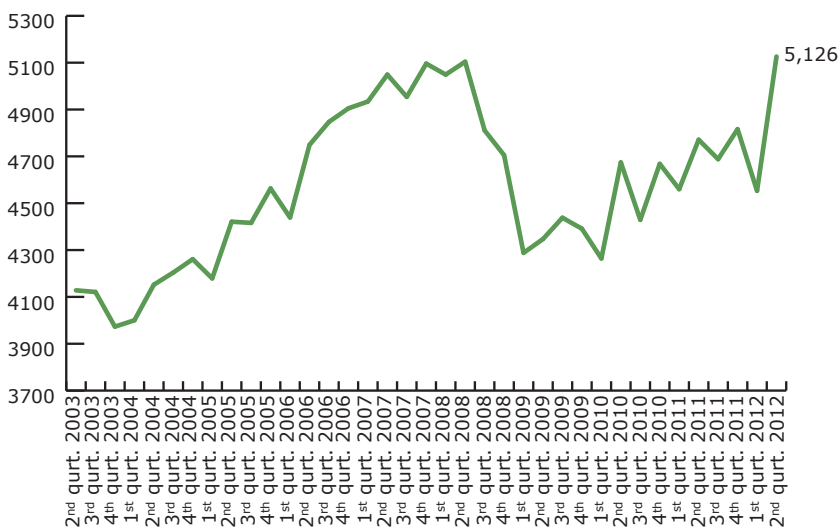
### Contents

Border census – lorry traffic to Denmark

Themes – based on partial results

Route distribution of lorry traffic in and out of Denmark

### Lorries into Denmark per day



# BORDER CENSUS

## Record number of lorries cross the border

**On average 5,126 lorries drove into Denmark every day during the second quarter 2012. This is more than ever before.**

5,126 lorries drove into Denmark every day during the spring months. This is shown in new figures from ITD's border census covering the second quarter 2012. This represents an increase of 7.5 per cent compared to the same quarter last year.

Thus the record from 2008 declined. In the second quarter 2008, with the economy roaring away, 5,104 lorries took the trip into Denmark. Since then the number divided to 4,347 lorries during the comparable second quarter in the crisis year 2009. The record may indicate an upturn in the Danish economy.

Both foreign and Danish lorries are part of the increasing traffic into the country. The share of lorries with Danish number plates is stable. 23.6 per cent of the lorries

had Danish number plates during second quarter 2012 compared to 23.7 per cent in second quarter 2011.

The border census shows that the Danish transport companies gain real market shares on the Danish market at the moment. Of the foreign lorries driving into Denmark an increasing part – namely 34 per cent - is owned by Danish road hauliers. During the same quarter last year only 31 per cent of the foreign registered lorries were owned by Danish companies. 42 per cent Eastern European lorries crossing the border are Danish owned. This is the highest share ever.

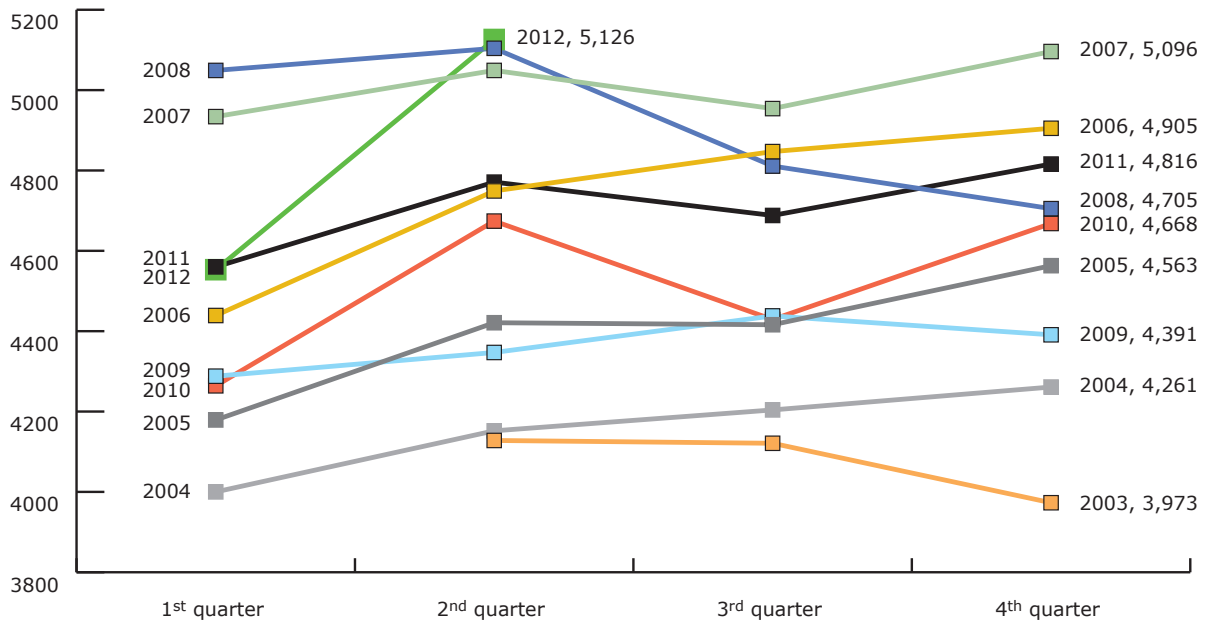
At the same time the figures show that German lorries lose market shares in Denmark. This may be a result in increasing driver shortage in Germany.

### ITD

Lyren 1 . DK-6330 Padborg  
Tel. +45 7467 1233  
Fax +45 7467 4317  
itd@itd.dk . www.itd.dk

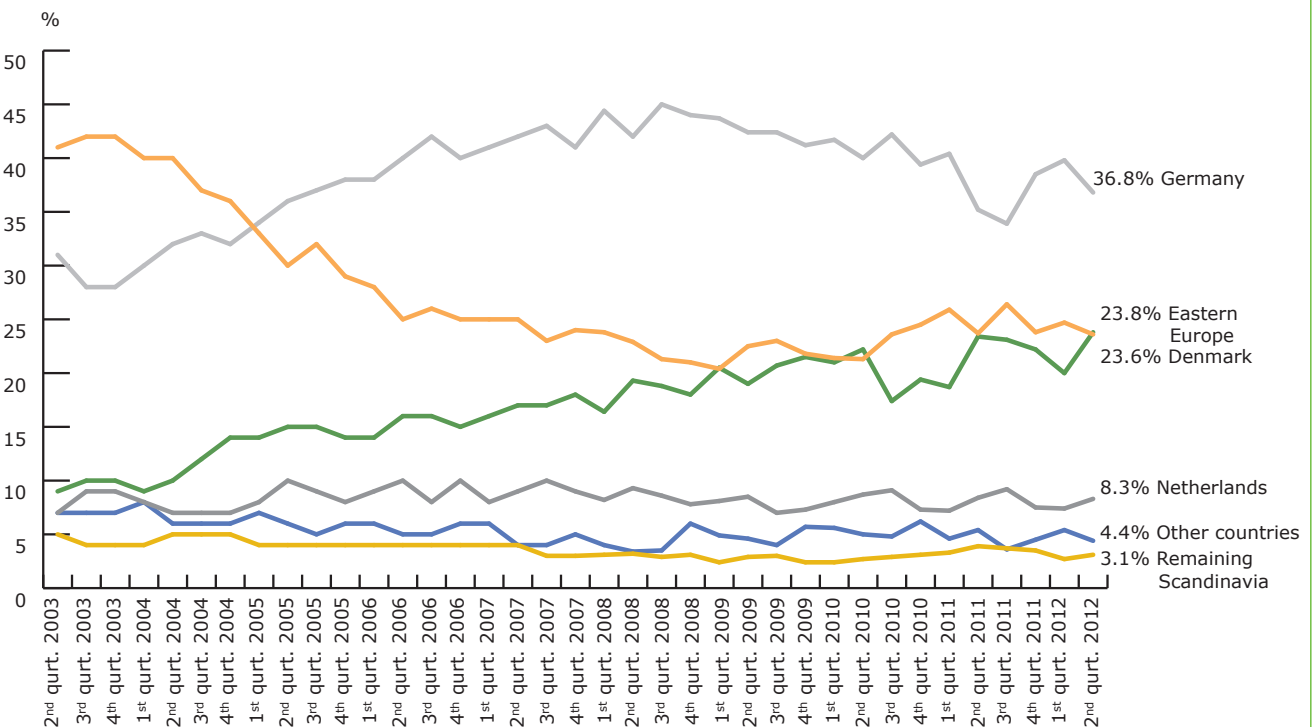
# Border census – lorry traffic into Denmark

## Quarter comparison 2003-2012



Note: The census includes lorries entering into Denmark using the Danish border in South Jutland, the Øresund Bridge and Scandlines A/S' ferry routes

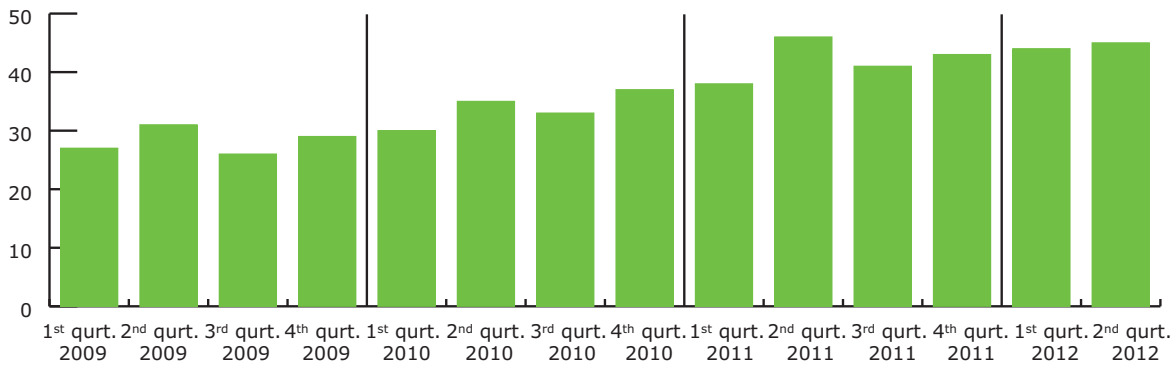
## Nationality distribution



Note: The censuses on the Øresund Bridge are not divided into nationalities and are therefore not included in this report

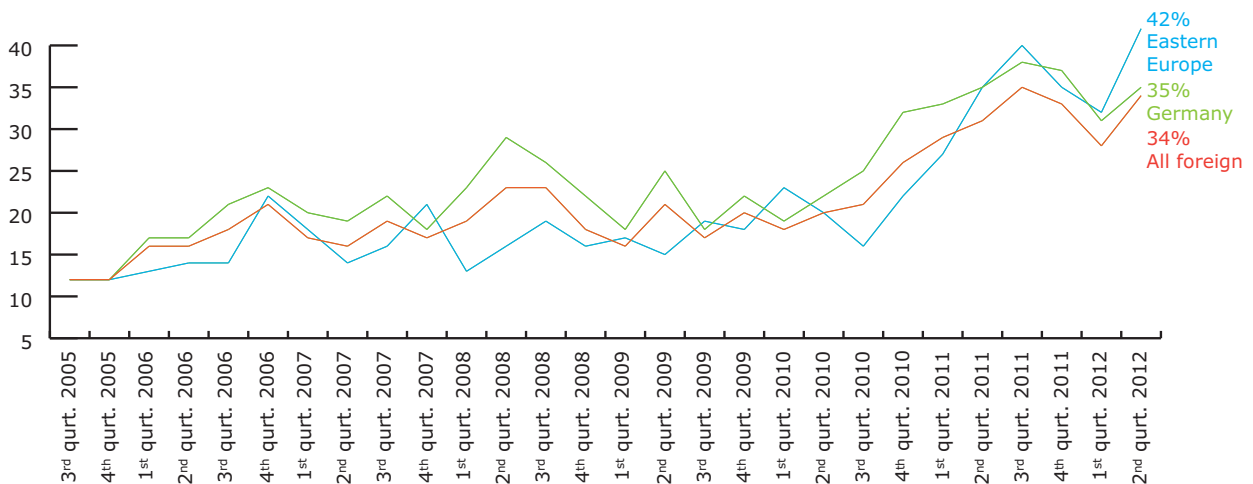
# Themes – based on partial results

## Lorries above 20 meters



Note: On Scandlines A/S' ferry route between Helsingør and Helsingborg and on the Øresund Bridge separate registrations of lorries above 20 meters have been made – this means of modular road trains and special transports except automobile transports

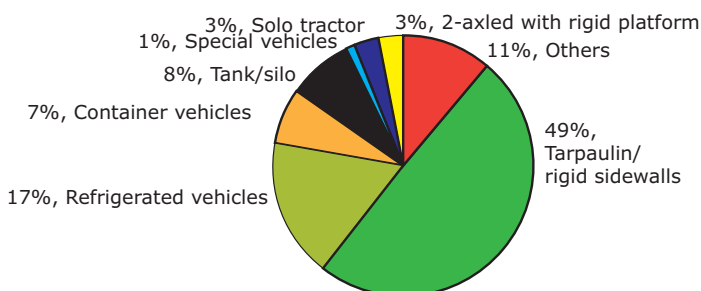
## Share of foreign lorries owned by Danish subsidiaries



Note 1: On the Danish border in South Jutland near Padborg and Frøslev separate registrations have been made of foreign lorries belonging to Danish owned subsidiaries

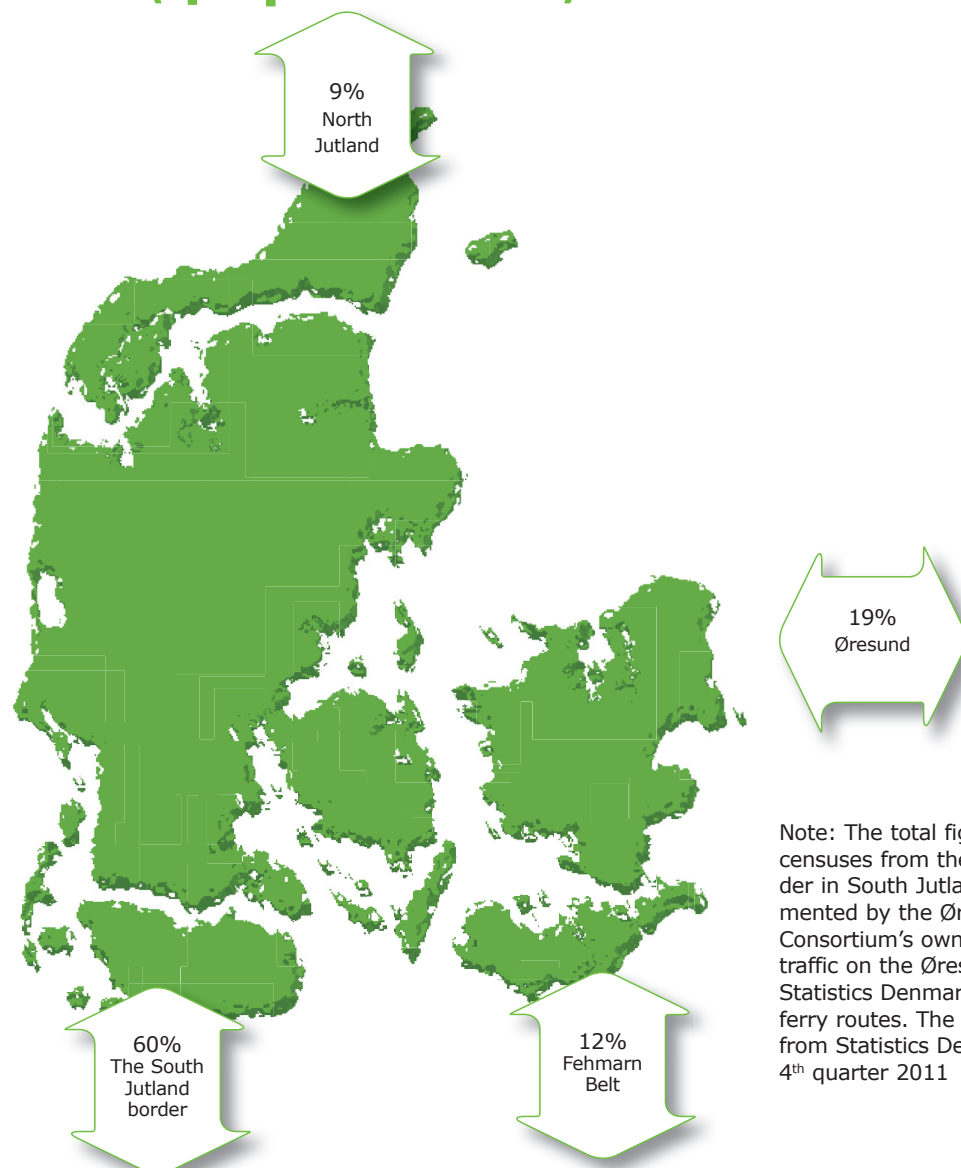
Note 2: Red: For every 100 foreign lorry 34 are owned by Danish road hauliers – Green: For every 100 German lorry 35 are owned by Danish road hauliers – Blue: For every 100 Eastern European lorry 42 are owned by Danish road hauliers

## Type of material 2<sup>nd</sup> quarter 2012



Note: On the Danish border in South Jutland near Padborg and Frøslev separate registrations of type of material are made.

# Route distribution of lorry traffic in and out of Denmark (4<sup>th</sup> quarter 2011)



Note: The total figure includes censuses from the Danish border in South Jutland, complemented by the Øresund Bridge Consortium's own censuses of traffic on the Øresund Bridge and Statistics Denmark's reports on ferry routes. The latest censuses from Statistics Denmark are from 4<sup>th</sup> quarter 2011

## Method

ITD's border censuses include lorries driving into Denmark across the Danish-German border and across the Øresund Bridge or using Scandlines A/S' ferry routes. ITD records the number of lorries with a manual cen-

sus every quarter during a representative period totalling 24 hours. ITD's border censuses indicate the very latest tendencies in international lorry traffic to and from Denmark. The statistics can be used with caution to

indicate export activities and business climate in Denmark. Read more about the method, and see background tables on [www.itd.dk](http://www.itd.dk) under the menu "service".

### PUBLICATION



**Trade Organisation  
for the Danish Road Transport of Goods**

Lyren 1 . DK-6330 Padborg  
Tel. +45 7467 1233 . Fax +45 7467 4317  
itd@itd.dk . [www.itd.dk](http://www.itd.dk)

**Composition:** Force Technology  
**Layout:** ITD, Trade Organisation for the Danish Road Transport of Goods

© ITD, Trade Organisation for the Danish Road Transport of Goods  
*Data, text, figures and/or tables may only be used by stating the source.*