

1st quarter 2012

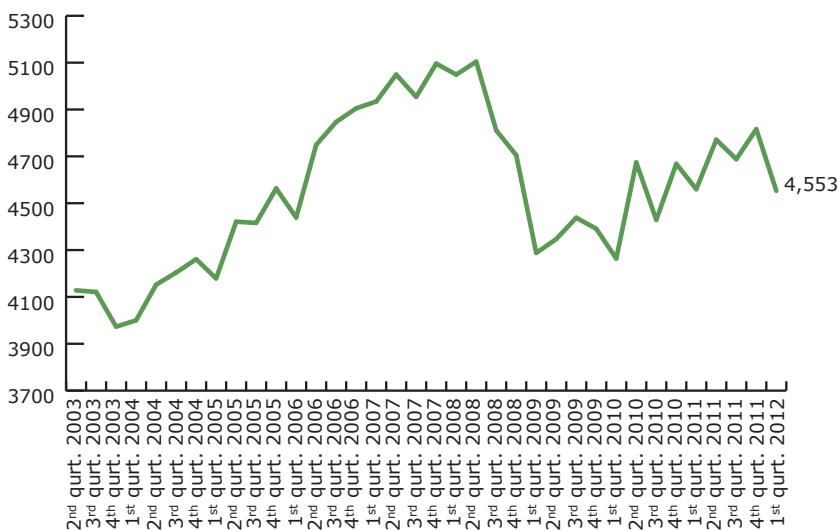
Contents

Border census – lorry traffic to Denmark

Themes – based on partial results

Route distribution of lorry traffic in and out of Denmark

Lorries into Denmark per day



BORDER CENSUS

The lorry traffic across the borders is on a level with last year

ITD's first border census 2012 shows that the quantity of lorry traffic into Denmark continues to be on a stable, high level similar to the same quarter last year.

ITD's border census for the first quarter of 2012 shows that traffic is on a level with the same quarter last year. 4,553 lorries drove on average into Denmark every day in the first quarter of the year.

Thus, lorry traffic is still at a relatively high level in spite of debt crises and financial challenges, and the number of vehicles consolidates the conception of a beginning upturn.

In the first quarter of 2011 4,560 lorries crossed the border while the number of the crisis year 2009 was down to 4,288.

The quota of lorries with Danish number plates has been increasing since 2010. 24.7 per cent of the lorries driving over

the borders in the first quarter of 2012 carried Danish number plates. The number was 21.4 per cent in the first quarter 2010.

According to ITD's census the Eastern European lorries are not in progress on the Danish roads – on the contrary. In the first quarter of 2012 20 per cent of the lorries carried Eastern European number plates. The share was 22.2 per cent in the last quarter of 2011.

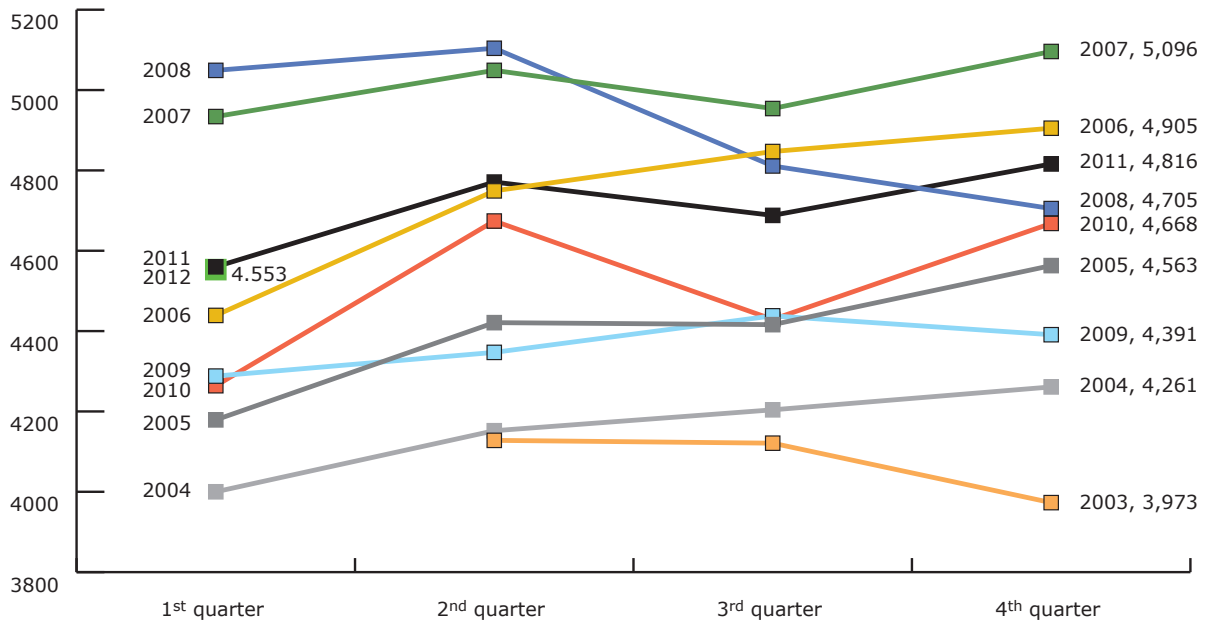
ITD's border census registers the traffic of lorries into the country across the South Jytlund border, across Øresund and Fehmarn Belt as well as Kattegat.

ITD

Lyren 1 . DK-6330 Padborg
Tel. +45 7467 1233
Fax +45 7467 4317
itd@itd.dk . www.itd.dk

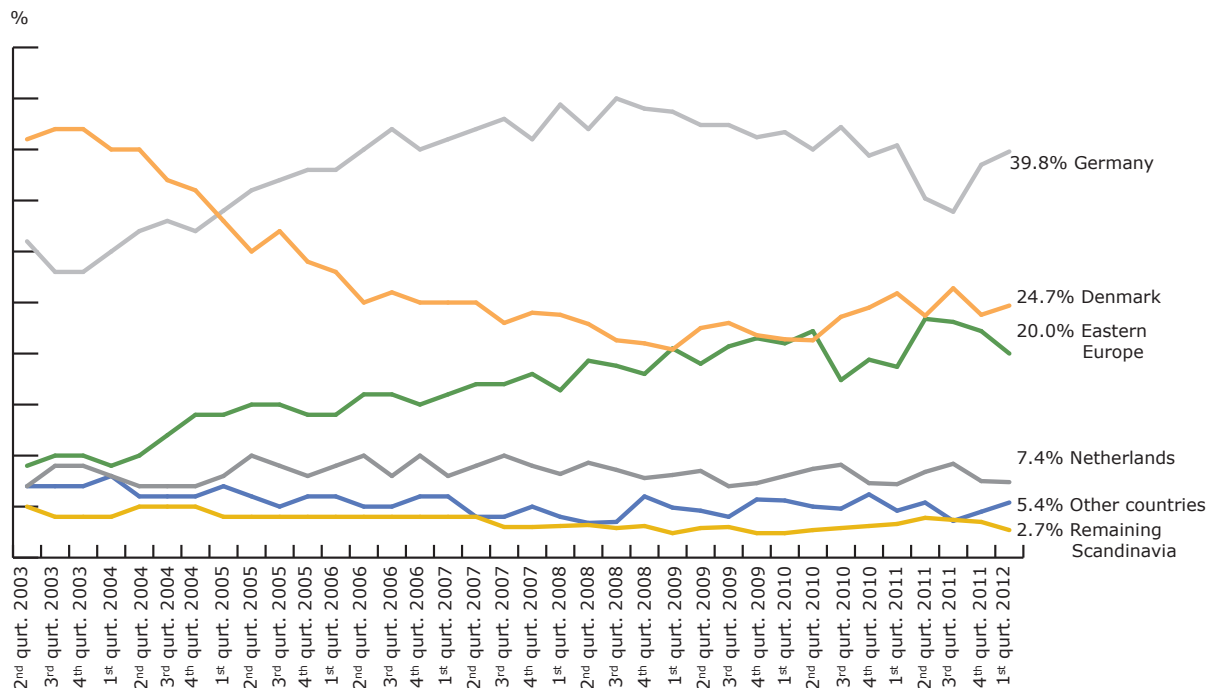
Border census – lorry traffic into Denmark

Quarter comparison 2003-2011



Note: The census includes lorries entering into Denmark using the Danish border in South Jutland, the Øresund Bridge and Scandlines A/S' ferry routes

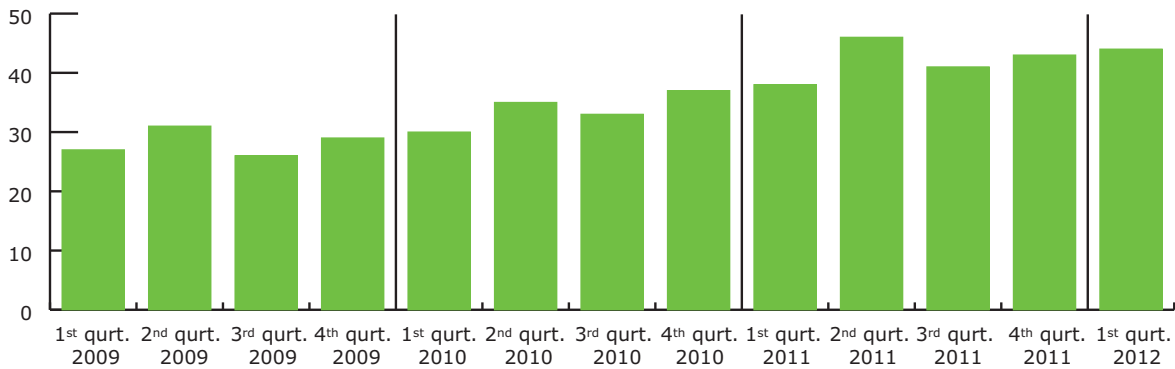
Nationality distribution



Note: The censuses on the Øresund Bridge are not divided into nationalities and are therefore not included in this report

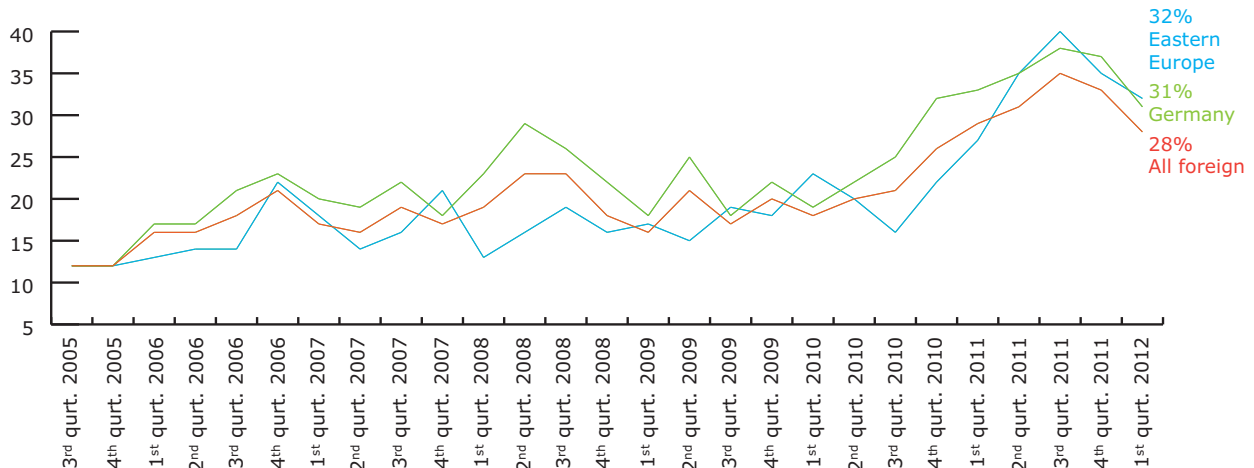
Themes – based on partial results

Lorries above 20 meters



Note: On Scandlines A/S' ferry route between Helsingør and Helsingborg and on the Øresund Bridge separate registrations of lorries above 20 meters have been made – this means of modular road trains and special transports except automobile transports

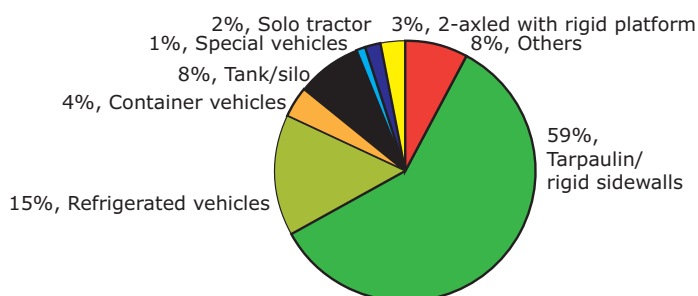
Share of foreign lorries owned by Danish subsidiaries



Note 1: On the Danish border in South Jutland near Padborg and Frøslev separate registrations have been made of foreign lorries belonging to Danish owned subsidiaries

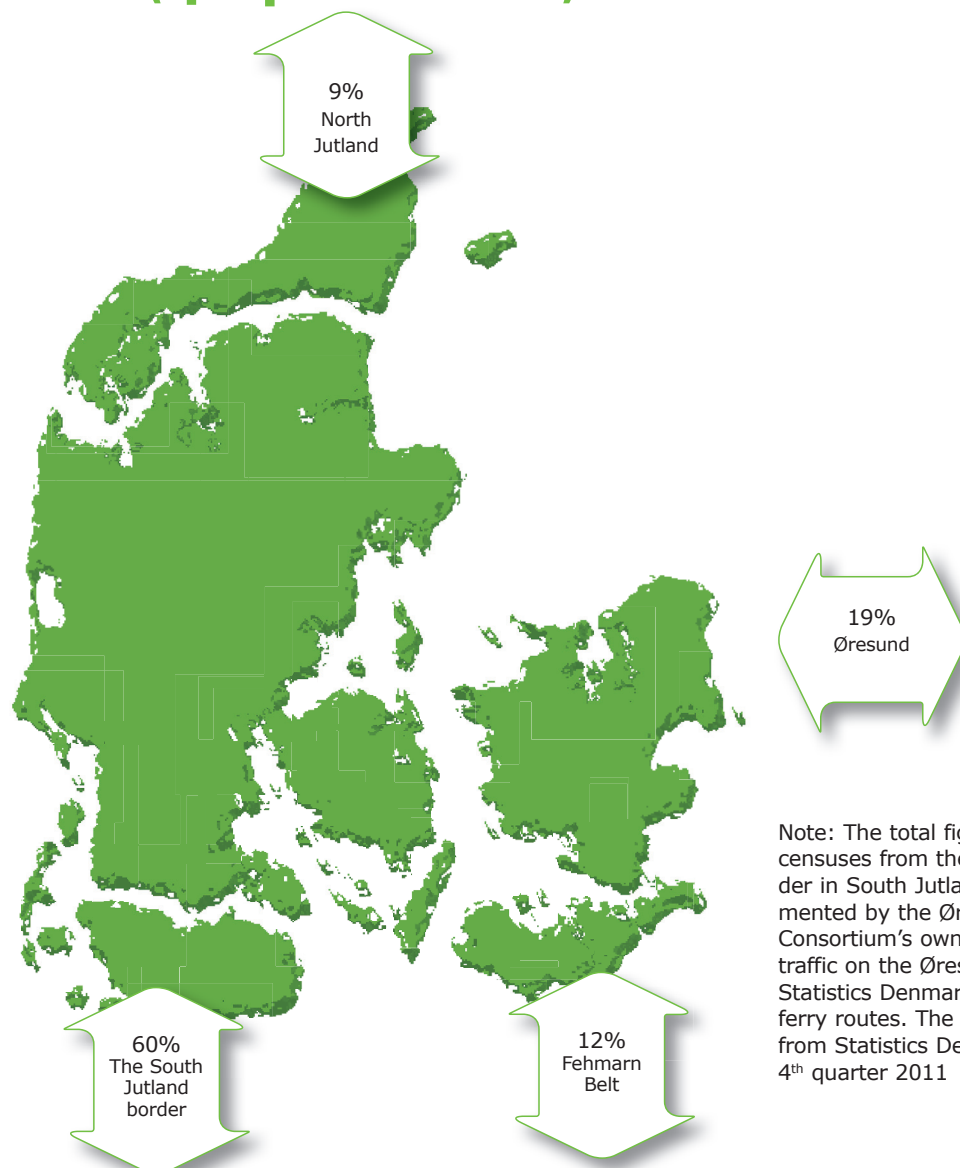
Note 2: Red: For every 100 foreign lorry 28 are owned by Danish road hauliers – Green: For every 100 German lorry 31 are owned by Danish road hauliers – Blue: For every 100 Eastern European lorry 32 are owned by Danish road hauliers

Type of material 1st quarter 2012



Note: On the Danish border in South Jutland near Padborg and Frøslev separate registrations of type of material are made.

Route distribution of lorry traffic in and out of Denmark (4th quarter 2011)



Note: The total figure includes censuses from the Danish border in South Jutland, complemented by the Øresund Bridge Consortium's own censuses of traffic on the Øresund Bridge and Statistics Denmark's reports on ferry routes. The latest censuses from Statistics Denmark are from 4th quarter 2011

Method

ITD's border censuses include lorries driving into Denmark across the Danish-German border and across the Øresund Bridge or using Scandlines A/S' ferry routes. ITD records the number of lorries with a manual cen-

sus every quarter during a representative period totalling 24 hours. ITD's border censuses indicate the very latest tendencies in international lorry traffic to and from Denmark. The statistics can be used with caution to

indicate export activities and business climate in Denmark. Read more about the method, and see background tables on www.itd.dk under the menu "service".

PUBLICATION



**Trade Organisation
for the Danish Road Transport of Goods**

Lyren 1 . DK-6330 Padborg
Tel. +45 7467 1233 . Fax +45 7467 4317
itd@itd.dk . www.itd.dk

Composition: Force Technology
Layout: ITD, Trade Organisation for the Danish Road Transport of Goods

© ITD, Trade Organisation for the Danish Road Transport of Goods
Data, text, figures and/or tables may only be used by stating the source.