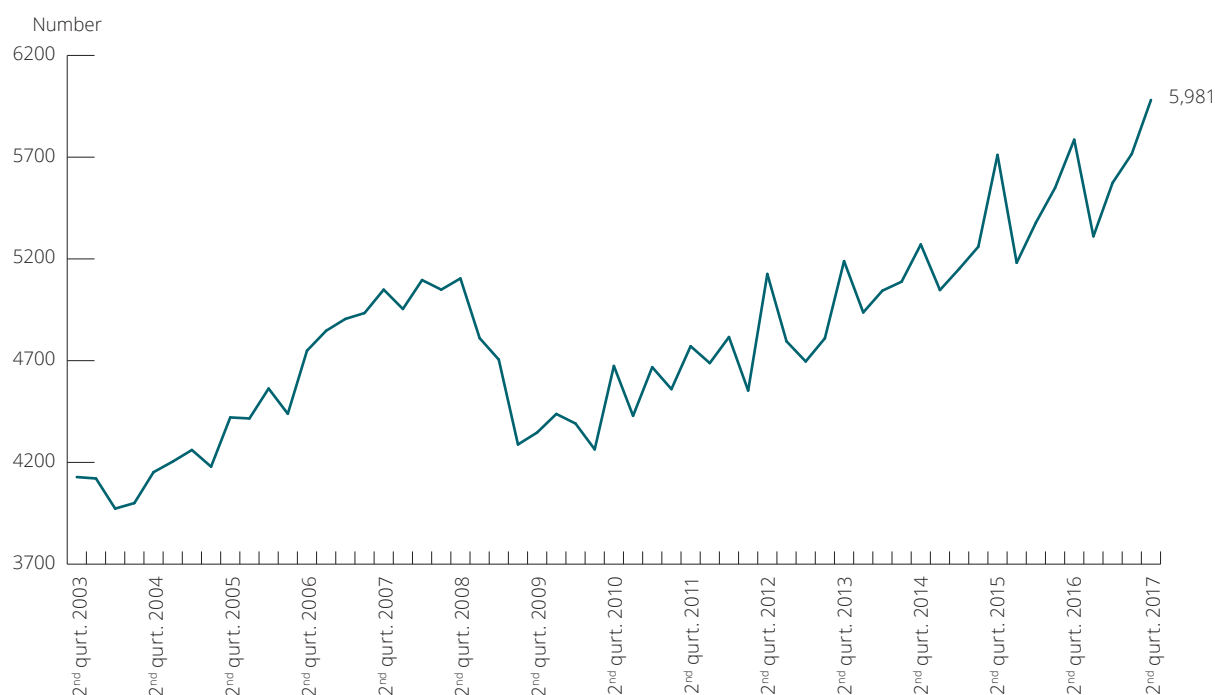




BORDER CENSUS

2nd quarter 2017

► Trucks per day across the borders in South Jutland, Fehmarn Belt and Øresund towards Denmark



RECORD IN TRUCKS DRIVING INTO DENMARK

Just about 6,000 trucks drive on a daily basis over the Danish borders into Denmark. This is record and proof for trucks being the favourite mean of transport within transport of products and goods in the EU. At the same time, this increase indicates there still being activity in the transport and logistics sector.

ITD's border censuses for the 2nd quarter 2017 show a continuous increase in the number of truck transports on a daily basis crossing the Danish border. The level has never been higher, and it is seen positively with im- and export eyes. Every day 5,981 trucks roll across

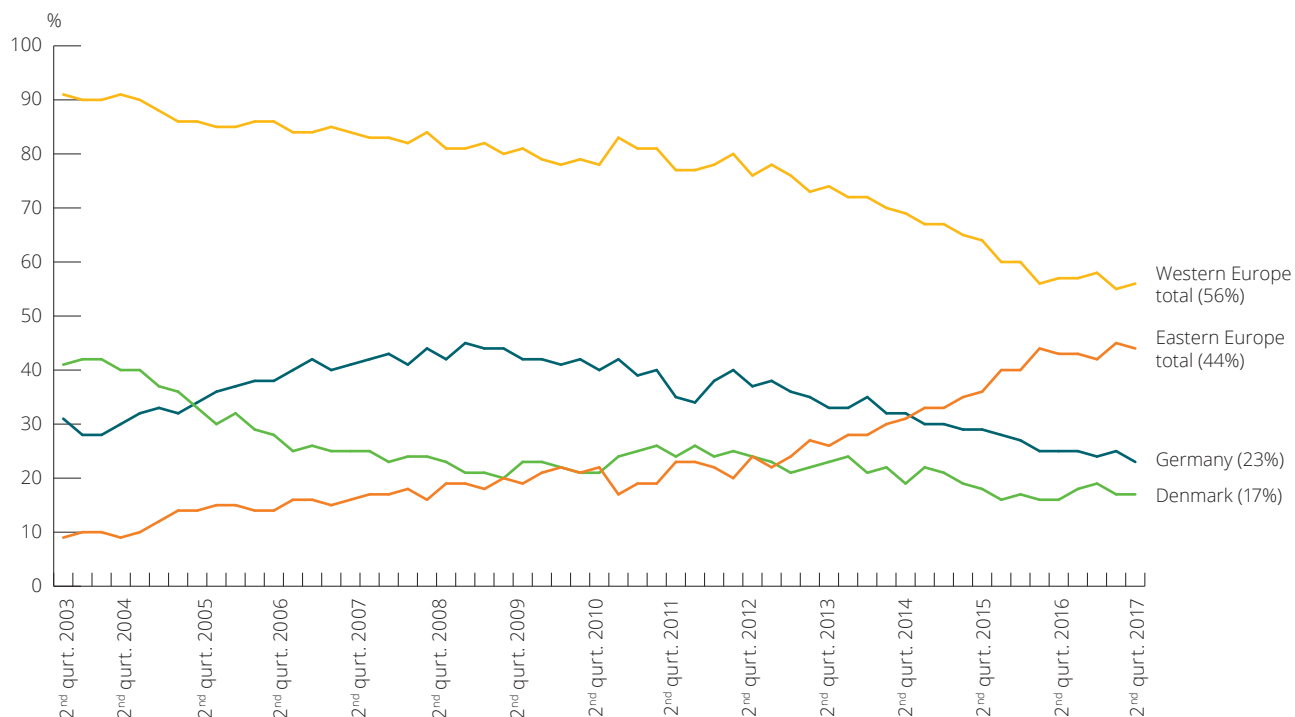
the Danish border, and compared to first quarter of the year it is a rise of 265 trucks per day. Seen in relation to the same time last year, it is an increase of 3.4 per cent corresponding to just about 200 trucks more on a daily basis towards Denmark.

The border in South Jutland continues to be the largest international border for truck traffic in Denmark. Out of the 5,981 trucks crossing the Danish border on a daily basis 3,613 trucks cross the South Jutland border. It is an increase of 2.7 per cent during the past year.

BORDER CENSUS

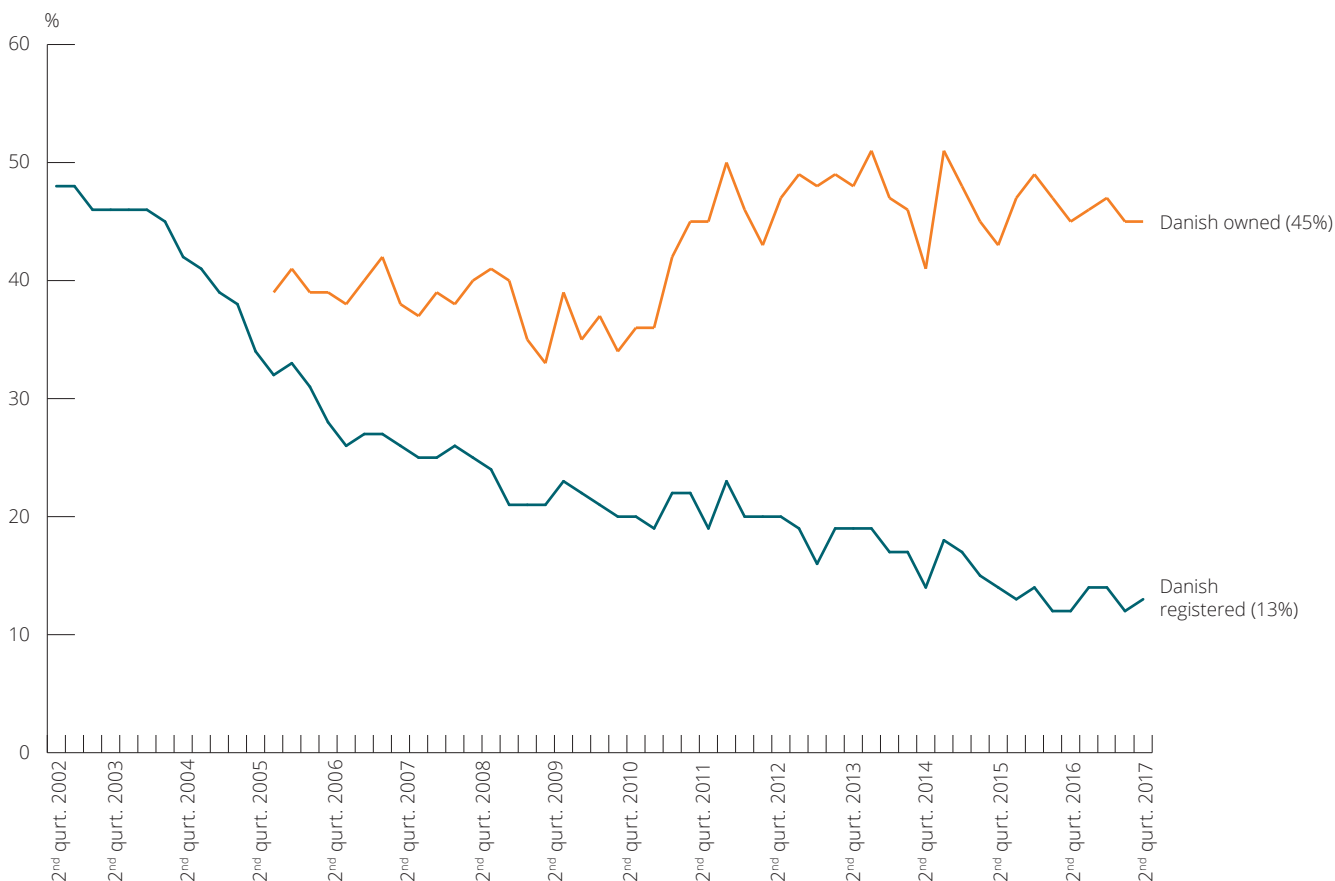
– TRUCK TRAFFIC INTO DENMARK

► Nationality distribution of the truck traffic towards Denmark across the borders in South Jutland, Øresund and Fehmarn Belt



Note: Figures from South Jutland, HH Ferries and Scandlines without the Øresund Bridge and the Kattegat, where the censuses are not divided into nationalities.

► Danish owned trucks towards Denmark across the South Jutland border. Share of total traffic

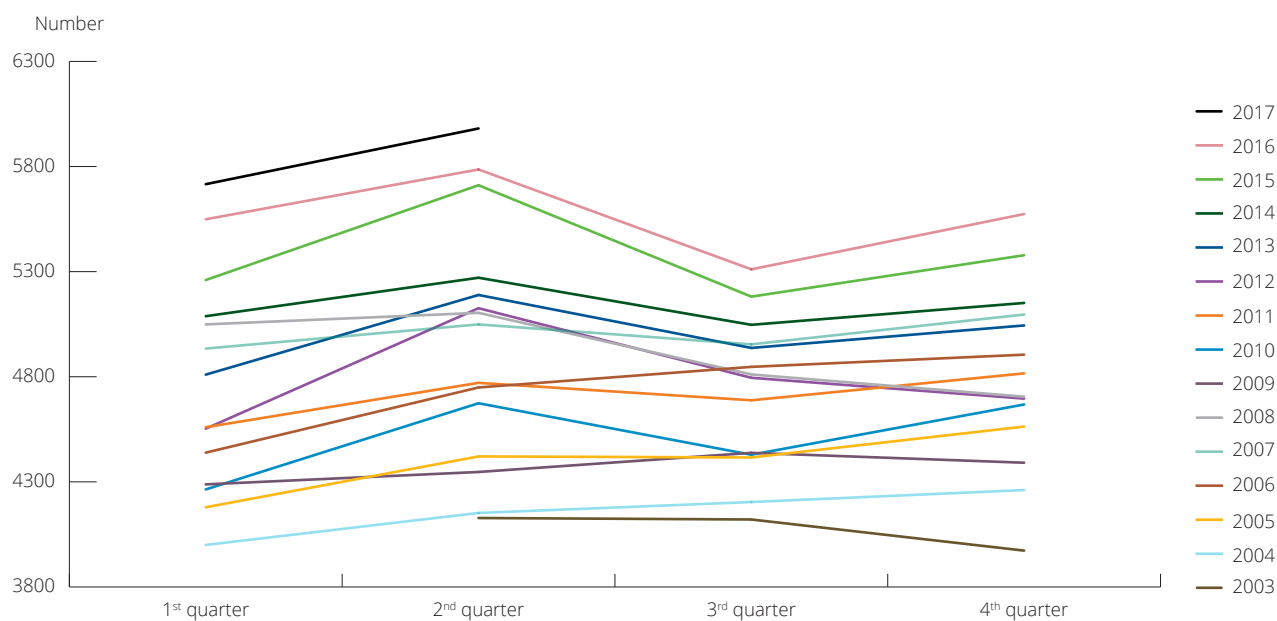


Note: The orange figure shows the total share of Danish registered trucks as well as foreign registered trucks, which it has been possible in connection with the census to connect to Danish road haulage companies with subsidiaries abroad (logo and name on the driver's cabin).

THEMES

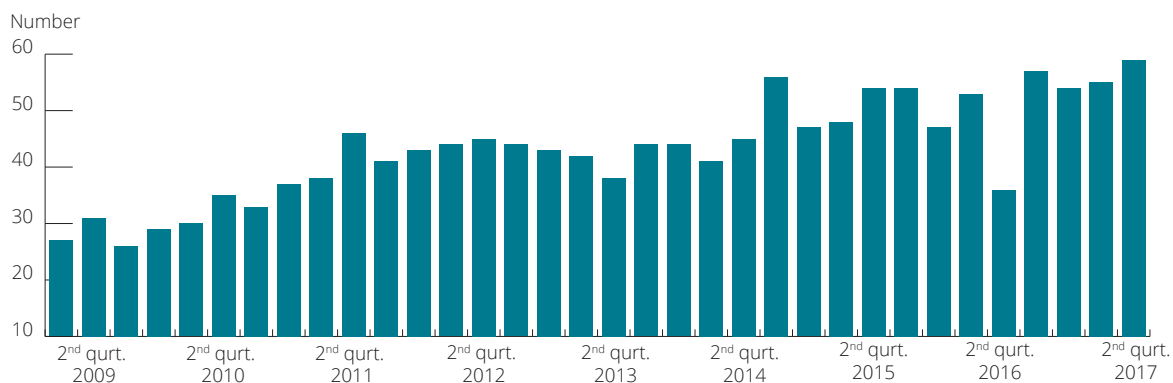
- BASED ON PARTIAL RESULTS

► Number of trucks towards Denmark across borders in South Jutland, Øresund and Fehmarn Belt. Number of trucks per day



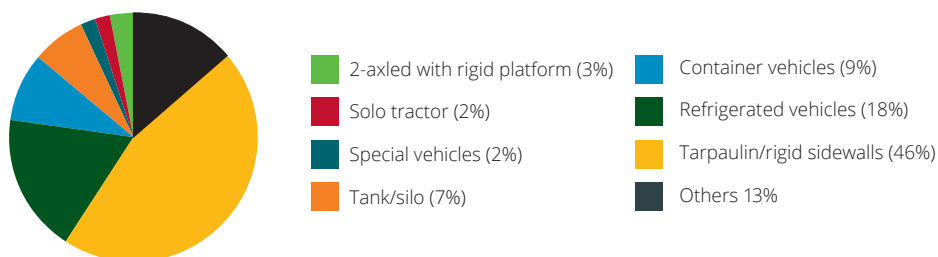
Note: Figures from South Jutland, Scandlines and HH Ferries without the Øresund Bridge and the Kattegat.

► Trucks over 20 meters



Note: On HH Ferries' route between Helsingør and Helsingborg and on the Øresund Bridge separate registrations of trucks over 20 meters have been made – this means of modular road trains and special transports except automobile transports.

► Type of material 2nd quarter 2017



Note: On the Danish borders in South Jutland near Padborg and Frøslev, separate registrations of type of material are made.

ROUTE DISTRIBUTION OF TRUCK TRAFFIC IN AND OUT OF DENMARK (1st quarter 2017)



North Jutland: 7%

Øresund: 21%

The South Jutland border: 56%

Fehmarn Belt: 15%

Note: The total figure includes censuses from the Danish border in South Jutland, complemented by the Øresund Bridge Consortium's own censuses of traffic on the Øresund Bridge and Statistics Denmark's reports on the ferry routes. The latest censuses from Statistics Denmark are from the 1st quarter 2017.

Other border crossings account for just over 1%.

METHOD

ITD's border censuses include trucks driving into Denmark across the Danish-German border and across the Øresund Bridge or using Scandlines' ferry and HH Ferries' routes. ITD calculates the number of lorries with a manual census every quarter during a representative period totalling 24 hours.

ITD's border censuses indicate the very latest tendencies in international truck traffic to and from Denmark. The statistics can be used with caution to indicate export activities and business environment in Denmark.

Find a detailed review of the statistics on www.itd.dk



Lyren 1 | DK-6330 Padborg
T: +45 7467 1233 | itd@itd.dk | www.itd.dk

Composition: transEco₂

Layout: ITD

© ITD, Association for the Danish road transport of goods
Data, text, figures and/or tables may only be used by stating the source.