



BORDER CENSUS

4th quarter 2017

5,970 TRUCKS CROSS THE BORDERS INTO DENMARK ON A DAILY BASIS

Once more truck traffic across the borders sets a new record. ITD's border censuses regards fourth quarter 2017 show that on a daily basis 5,970 trucks enter into Denmark across the borders. The figure is seven per cent higher than during the same period 2016. The number of trucks entering Denmark is now record high, and the positive development in growth continues.

ITD's border census shows regards fourth quarter 2017 that truck traffic into Denmark is at its highest level since the censuses started 2003. Every day, 5,970 trucks enter into Denmark. There are 113 trucks more per day compared to the census regards third quarter 2017 where the total number of trucks amounted to 5,857. Within the past year (that is from fourth quarter 2016 until fourth quarter 2017), traffic has increased by seven per cent (7.1 per cent) or 396 vehicles per day.

- The high number of trucks indicates that growth continues to go in the right direction. Huge amounts of goods are carried right now, says Carina Christensen, managing director at ITD.

The border in South Jutland is still Denmark's largest international border for truck traffic. Out of the total 5,970 trucks daily crossing the South Jutland border, 3,616 of the trucks cross the South Jutland border. That is an increase of six per cent the latest year. However, the biggest growth has been on Øresund and Fehmarn Belt.

GROWTH IN THE NUMBER OF TRUCKS PER DAY AND DIRECTION SINCE FOURTH QUARTER 2016

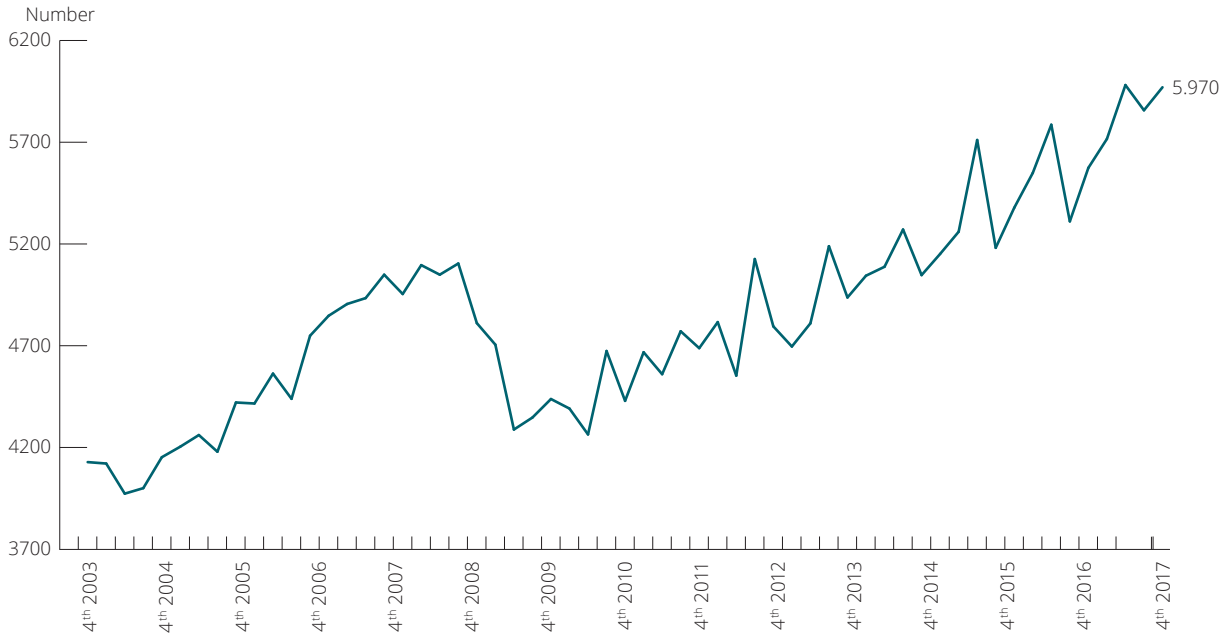
South Jutland	approximately 186 vehicles per direction per day
Øresund	approximately 112 vehicles per direction per day
Fehmarn	approximately 98 vehicles per direction per day

GROWTH IN THE NUMBER OF TRUCKS PER DAY PER DIRECTION IN PER CENT SINCE THIRD QUARTER 2016

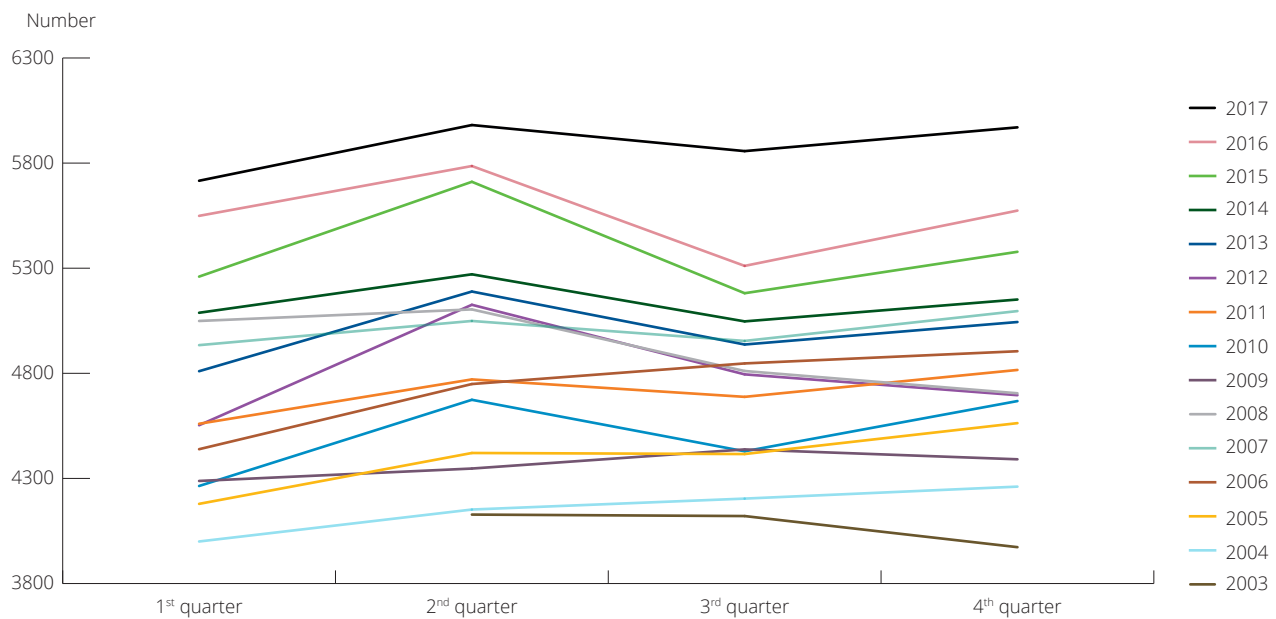
South Jutland	approximately 6 per cent increase
Øresund	approximately 9 per cent increase
Fehmarn	approximately 10.5 per cent increase

ITD'S BORDER CENSUS

► Trucks per day across the borders in South Jutland, Fehmarn Belt and Øresund towards Denmark



► Number of trucks towards Denmark across borders in South Jutland, Øresund and Fehmarn Belt. Number of trucks per day



Note: Figures from South Jutland, Scandlines and HH Ferries without the Øresund Bridge and the Kattegat.

Border Census 4th quarter 2017 - GB | VAT: 40990917

► Wanting more material regards the ITD Border Census, please contact:



Morten Jacobsen
 Head of Communication
 mja@itd.dk
 M: +45 6020 8690



Lyren 1 | DK-6330 Padborg
 T: +45 7467 1233
 itd@itd.dk | www.itd.dk

Composition: transEco₂
Layout: ITD

© ITD, Association for the Danish road transport of goods
 Data, text, figures and/or tables may only be used by stating the source.