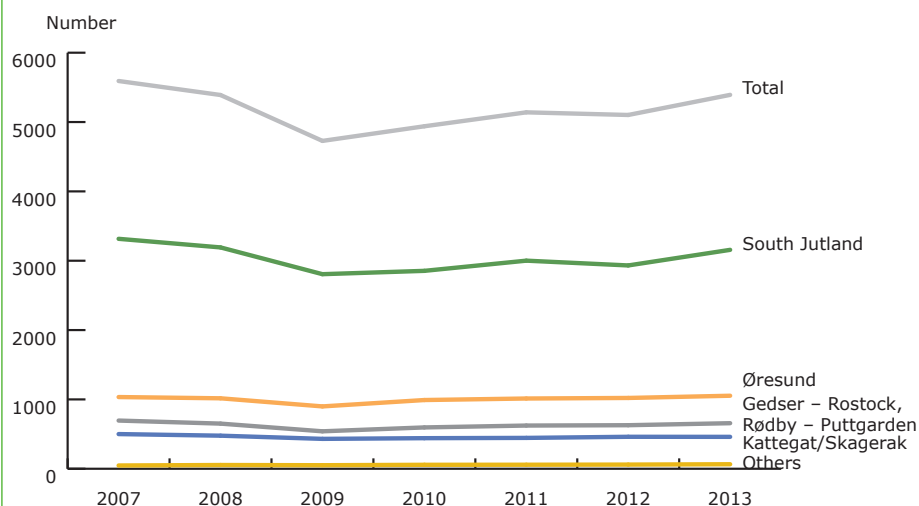


Annual Census 2013

Lorry traffic to/from Denmark distributed on border crossings. Lorries/days/direction



Source: ITD & Statistics Denmark

BORDER CENSUS

Significant growth in lorry transport 2013

Lorry transport in and out of Denmark is now on the same level as before the financial crisis. This is shown in an overall statement of ITD's border censuses from the past year.

5,392 lorries drove into Denmark per day in 2013. That is an increase of 4.2 per cent compared to the year before, and it is the second highest traffic figure ever registered. The record was set in 2007 with 5,582 lorries per day. Contrary to the quarterly figures the annual census contains all traffic on all borders, as ITD's figures are complemented with data from Statistics Denmark.

It is now fourth year in a row with increase in border traffic with lorries, which pleases ITD, the trade association for Danish road transport of goods depending on having goods to carry.

Between one in five and one in four lorry, crossing the Danish borders, are Danish. The share of Danish lorries decreased in total with one single percentage point to 22 per cent in 2013. In spite of a decreasing trend the German lorries still represent the far largest single group in border traffic with a share of 34 per cent in 2013. The growth is found in the group of Eastern

European and Baltic countries representing a total border traffic share of 28 per cent.

However, nothing in the past year's development indicates that the Danish vehicles are totally on their way out of international traffic. The picture is that Danish lorries have decreased some in European traffic going south, while they have increased in traffic to Norway and Sweden.

49 per cent of the lorries, crossing the South Jutland border, are owned by Danish road hauliers, where only 18 per cent have Danish number plates.

In recent years there has been concern that foreign lorries also take shares of the Danish domestic goods when entering the country. This is, however, confirmed invalid by the calculations of the domestic transport work with Danish lorries produced by Statistics Denmark. They have in recent years shown progress for the Danish lorries on home ground.

ITD

Lyren 1 . DK-6330 Padborg
Tlf. +45 7467 1233
Fax +45 7467 4317
itd@itd.dk . www.itd.dk

The total lorry traffic into Denmark 2013

Lorry traffic to/from Denmark distributed on border crossings. Lorries/days/direction. Number

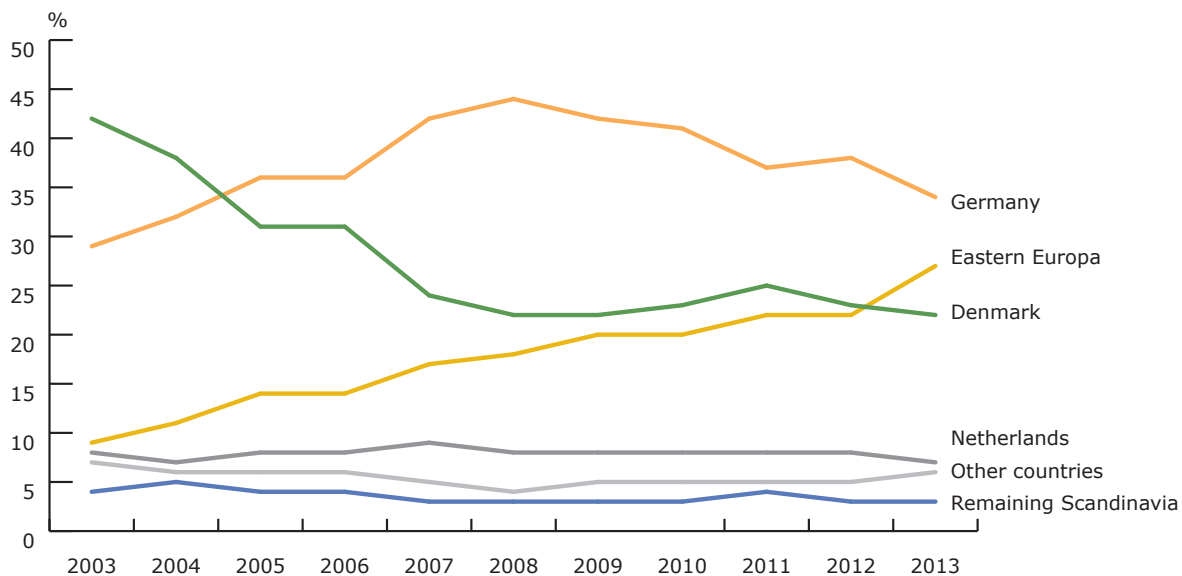
	South Jutland	Øresund	Gedser - Rostock Rødby - Puttgarden	Kattegat/ Skagerak	Others	Total
2013	3,157	1,053	657	460	65	5,392
2012	2,932	1,021	628	461	60	5,102
2011	3,001	1,013	623	445	58	5,140
2010	2,854	991	596	441	57	4,939
2009	2,806	899	540	431	51	4,728
2008	3,192	1,016	651	477	54	5,390
2007	3,316	1,034	695	500	47	5,592

Lorry traffic to/from Denmark distributed on border crossings. Lorries/days/direction. Per cent

	South Jutland	Øresund	Gedser - Rostock Rødby - Puttgarden	Kattegat/ Skagerak	Others	Total
2013	59%	20%	12%	9%	1%	100%
2012	57%	20%	12%	9%	1%	100%
2011	58%	20%	12%	9%	1%	100%
2010	58%	20%	12%	9%	1%	100%
2009	59%	19%	11%	9%	1%	100%
2008	59%	19%	12%	9%	1%	100%
2007	59%	18%	12%	9%	1%	100%

Note: ITD's border censuses cover South Jutland, Øresund and Femern Belt. The other figures are taken from Statistics Denmark. Fourth quarter in these figures are estimated based on the average trend in the other quarters.

Nationality distribution on Scandlines and South Jutland



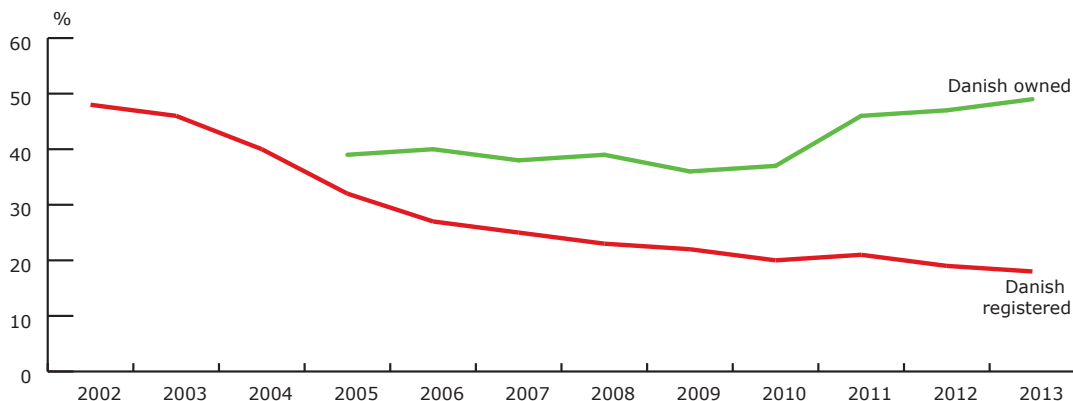
Nationality distribution on Scandlines and South Jutland

	Denmark	Germany	Netherlands	Remaining Scandinavia	Eastern Europa	Other countries
2007	24%	42%	9%	3%	17%	5%
2008	22%	44%	8%	3%	18%	4%
2009	22%	42%	8%	3%	20%	5%
2010	23%	41%	8%	3%	20%	5%
2011	25%	37%	8%	4%	22%	5%
2012	23%	38%	8%	3%	22%	5%
2013	22%	34%	7%	3%	27%	6%

Note: Figures from South Jutland and Scandlines, without Øresund Bridge and Kattegat, where the censuses are not divided into nationalities.

Danish owned and Danish registered lorries across the Danish-German border in South Jutland

Nationality distribution on the South Jutland border



Note: "Danish owned" shows the number of Danish registered lorries as well as foreign registered lorries, which it has been possible in connection with the census to connect to Danish road haulage companies with subsidiaries abroad (logo or name on the driver's cabin).

Nationality distribution on the South Jutland border

	2007	2008	2009	2010	2011	2012	2013
Danish registered	25%	23%	22%	20%	21%	19%	18%
Danish owned	38%	39%	36%	37%	46%	47%	49%

Method

ITD's border censuses include lorries driving into Denmark across the Danish-German border and across the Øresund Bridge or using Scandlines A/S' ferry routes. ITD records the number of lorries with a manual cen-

sus every quarter during a representative period totalling 24 hours. ITD's border censuses indicate the very latest tendencies in international lorry traffic to and from Denmark. The statistics can be used with cau-

tion to indicate export activities and business environment in Denmark. Read more about the method, and see background tables on www.itd.dk under the menu "Branchen".

PUBLICATION



**Trade Association
for the Danish Road Transport of Goods**

Lyren 1 . DK-6330 Padborg
Tel. +45 7467 1233 . Fax +45 7467 4317
itd@itd.dk . www.itd.dk

Composition: Transeco₂
Layout: ITD – Trade Association for the
Danish Road Transport of Goods

© ITD – Trade Association for the Danish Road
Transport of Goods
*Data, text, figures and/or tables may only be used
by stating the source.*