

Contents

Border census

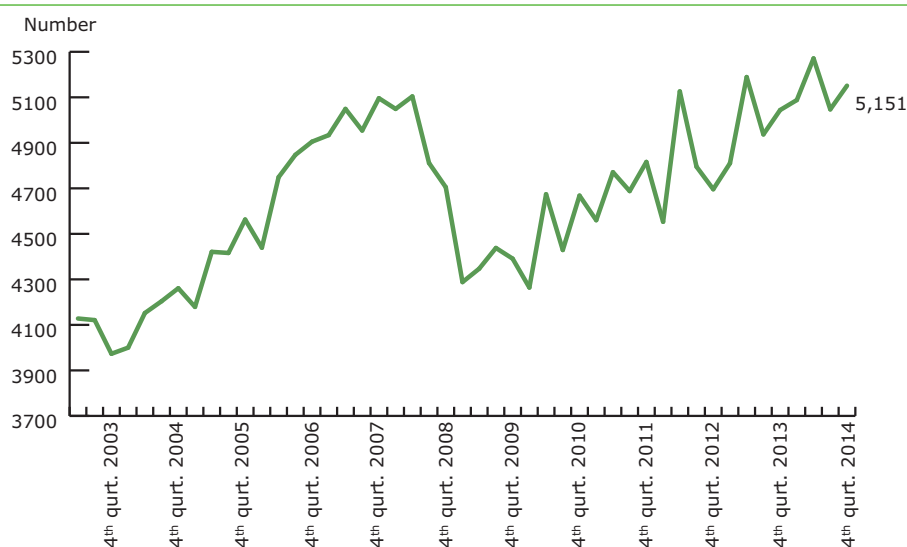
- lorry traffic to Denmark

Themes

- based on partial results

Route distribution of lorry traffic
in and out of Denmark

Lorries into Denmark per day



BORDER CENSUS

International lorry transport going to a record

ITD's border censuses for fourth quarter 2014 show that international lorry transport is going to a record year.

ITD's border censuses for fourth quarter 2014 show clearly that the level of international lorry transports continues to be high, like seen in the previous quarters. Thus, 5,151 lorries passed in over the boarders in the fourth quarter of 2014. Hereby, 2014 becomes a year of record since the beginning of the border censuses in 2000.

The national distribution of the lorries driving into Denmark shows that the Western European lorries are still in the lead in international road transport to Denmark with about 65 per cent of the lorry transports. From these, the German lorries with 31 per cent cover almost one third of the lorries driving into the country. The Eastern European lorries account for one third of all transports into the country as a total.

Danish export lorries amount to a relatively stable 21 per cent. The reason for this is that Danish lorries are more active with transports north of Denmark – in Sweden and Norway.

The border censuses also show that about half of the lorries crossing the borders into Denmark – equivalent to 49 per cent – have tarpaulins or rigid sidewalls drawing a picture that more goods and products are transported to industry and machining. 21 per cent of the lorries are refrigerated implying that one fifth of the transports carry i.e. food or flowers and plants.

The national transport market in Denmark still lives quite undisturbed by the increased international traffic. Here, there is indeed growth within the kingdom's borders.

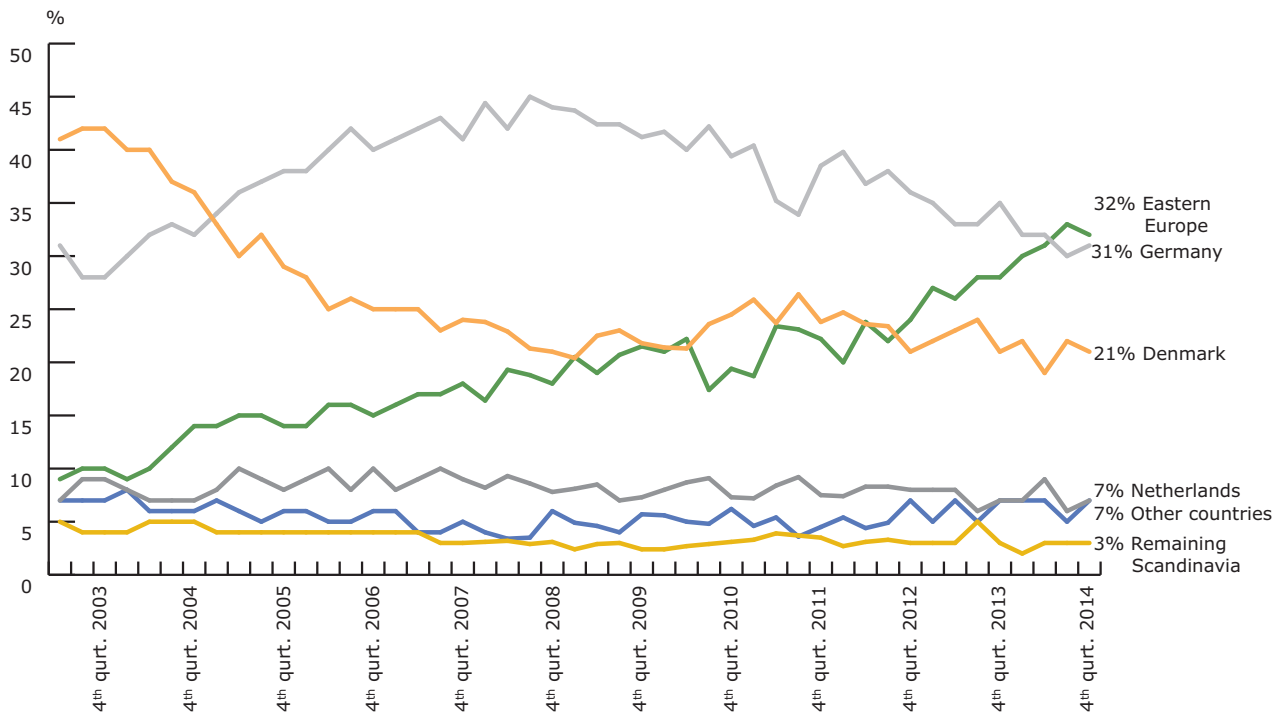


**Trade association
for the Danish road
transport of goods**

+45 7467 1233
itd.dk

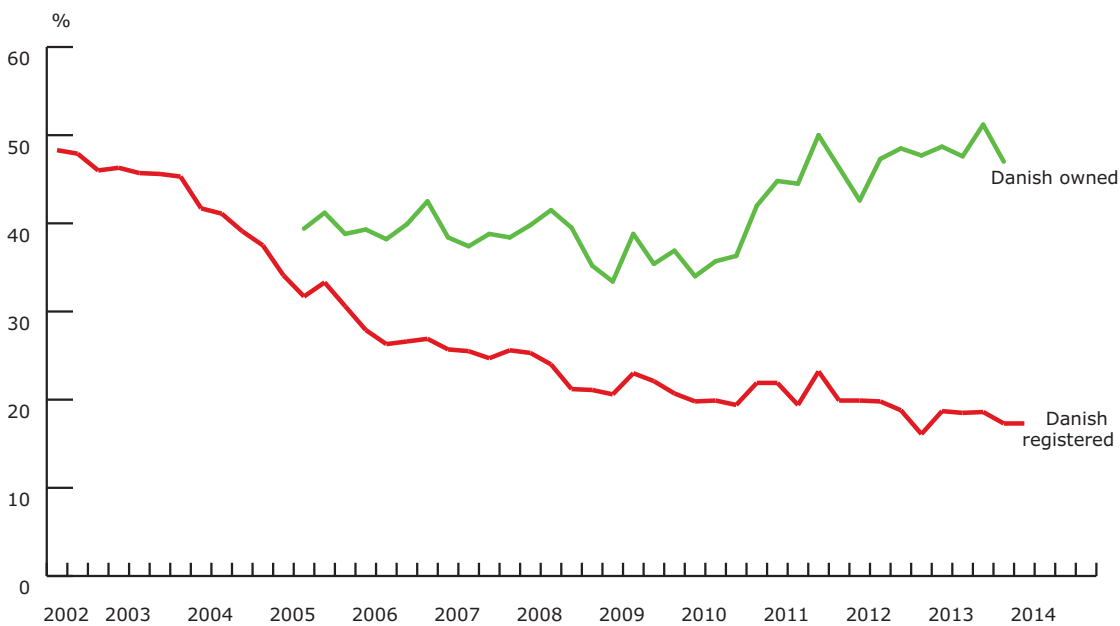
Border census – lorry traffic into Denmark

Nationality distribution



Note: Figures from South Jutland and Scandlines without the Øresund Bridge and the Kattegat, where the censuses are not divided into nationalities.

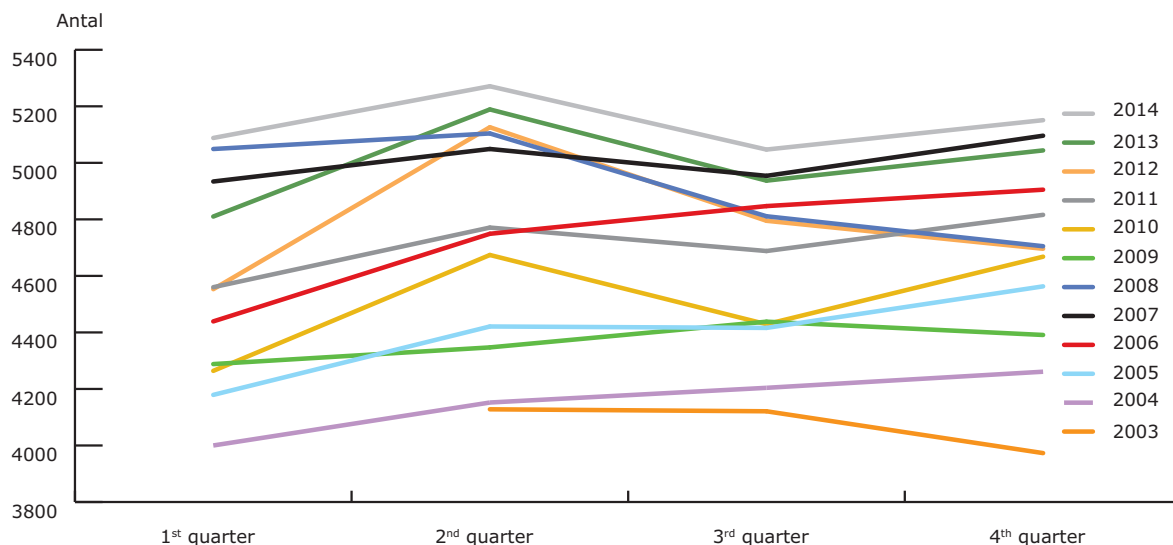
Danish owned lorries, the share of all lorries crossing the Danish-German border in South Jutland



Note: The green figure shows the total number of Danish registered lorries as well as foreign registered lorries, which it has been possible in connection with the census to connect to Danish road haulage companies with subsidiaries abroad (logo and name on the driver's cabin).

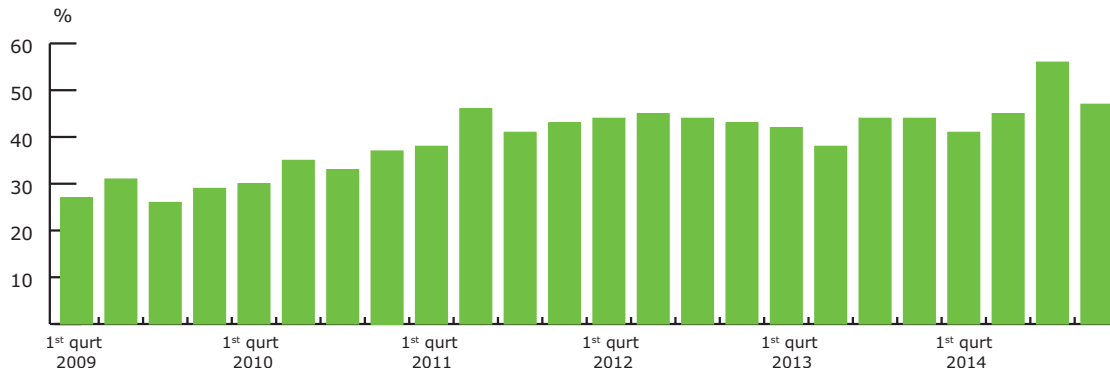
Themes – based on partial results

Quarterly comparison 2003-2014 country borders, Fehmarn and Øresund



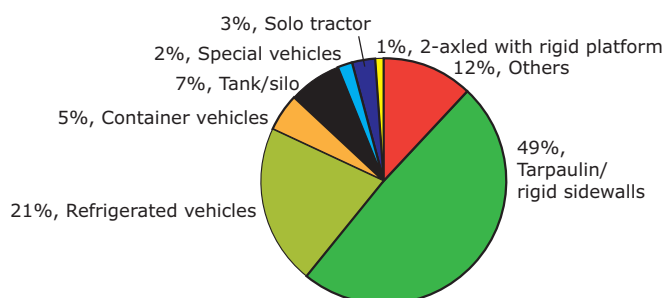
Note: Figures from South Jutland and Scandlines without the Øresund Bridge and the Kattegat.

Lorries over 20 meters



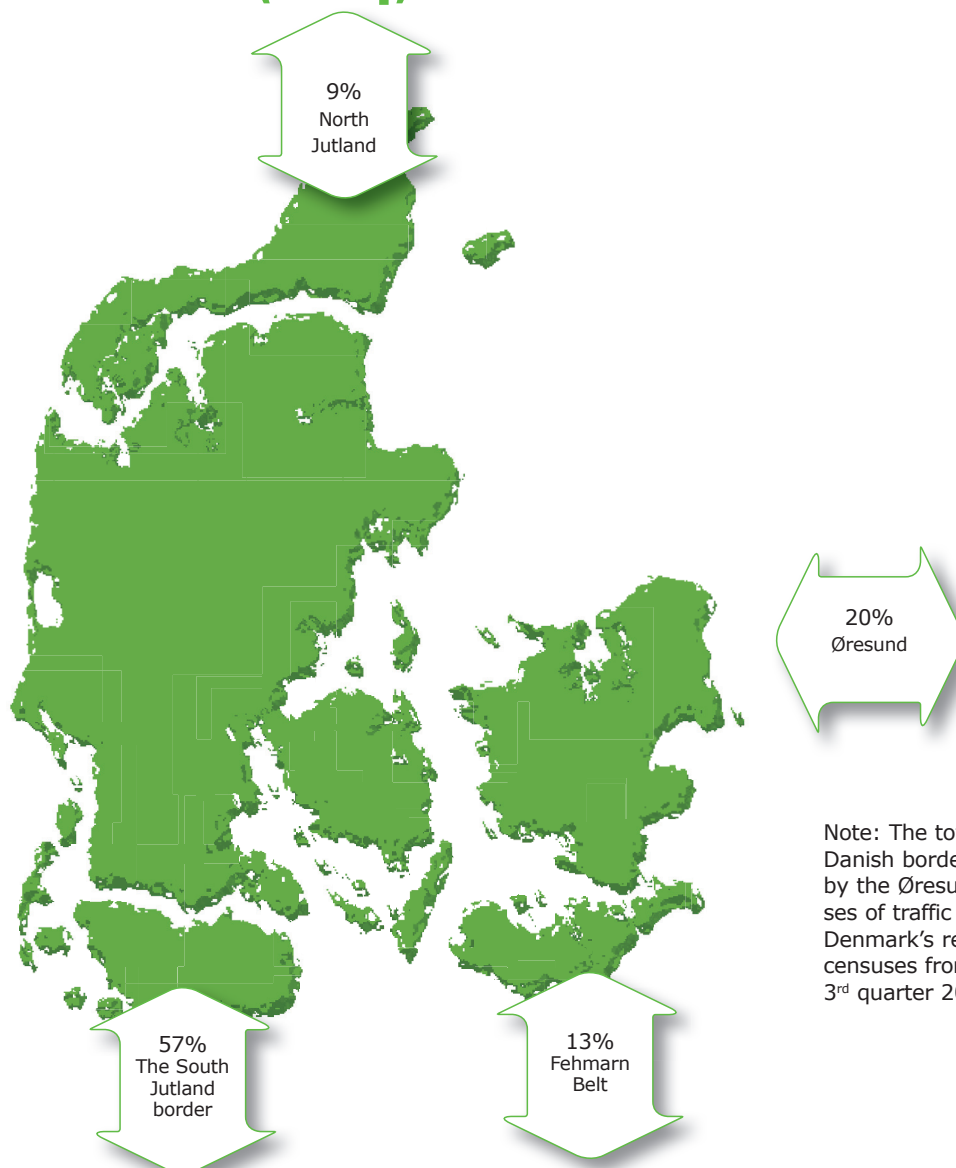
Note: On Scandlines A/S' ferry route between Helsingør and Helsingborg and on the Øresund Bridge separate registrations of lorries over 20 meters have been made – this means of modular road trains and special transports except automobile transports.

Type of material 4th quarter 2014



Note: On the Danish border in South Jutland near Padborg and Frøslev separate registrations of type of material are made.

Route distribution of lorry traffic in and out of Denmark (2014)



Note: The total figure includes censuses from the Danish border in South Jutland, complemented by the Øresund Bridge Consortium's own censuses of traffic on the Øresund Bridge and Statistics Denmark's reports on the ferry routes. The latest censuses from Statistics Denmark are from the 3rd quarter 2014.

Method

ITD's border censuses include lorries driving into Denmark across the Danish-German border and across the Øresund Bridge or using Scandlines' ferry routes. ITD records the number of lorries with a manual census every

quarter during a representative period totalling 24 hours. ITD's border censuses indicate the very latest tendencies in international lorry traffic to and from Denmark. The statistics can be used with caution to indicate export activities

and business environment in Denmark. Read more about the method, and see background tables on www.itd.dk under the menu "Branchen".

Publication



**Association for the
Danish road
transport of goods**

Lyren 1 . DK-6330 Padborg
Tel. +45 7467 1233
itd@itd.dk . www.itd.dk

Composition: Transeco₂
Layout: ITD – Trade Association for the Danish Road
Transport of Goods

© ITD – Trade Association for the Danish Road Transport of Goods

Data, text, figures and/or tables may only be used by stating the source.