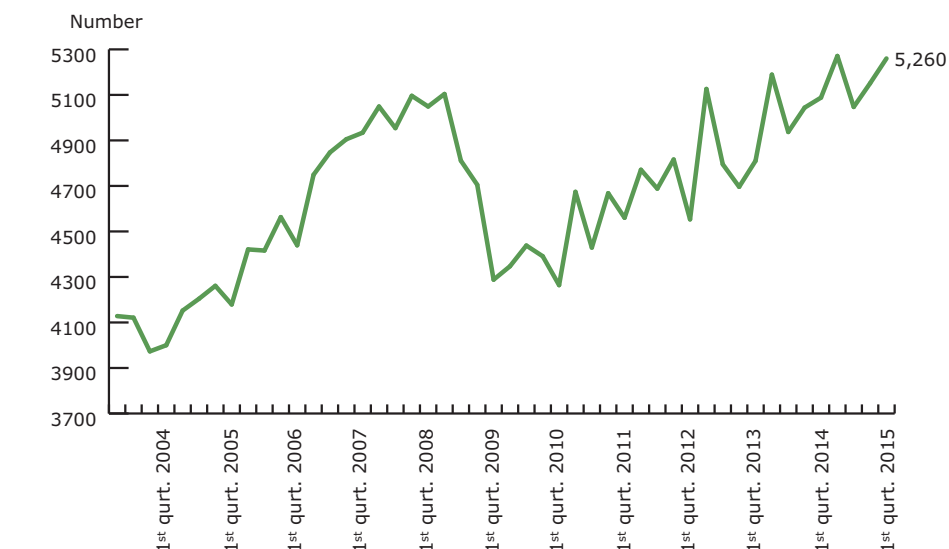


## 1<sup>st</sup> quarter 2015

### Contents

- Border census  
– lorry traffic to Denmark
- Themes  
– based on partial results
- Route distribution of lorry traffic in and out of Denmark

## Lorries into Denmark per day



# BORDER CENSUS



**Trade association  
for the Danish road  
transport of goods**

+45 7467 1233  
itd.dk

## Lorries keep the wheels turning

**The growth in road freight across Denmark's borders continues and hereby underlines specifically that at present the transport of goods move in high gear across the borders. Thus, 5,260 lorries drove on a daily basis across the Danish borders in the first quarter of 2015. The border censuses from the trade association for Danish road transport of goods, ITD show this.**

The import and export of goods by lorry is still growing. The total lorry traffic across the border in South Jutland and across Øresund and Fehmarn Belt was in 1<sup>st</sup> quarter 2015 on its highest since ITD censuses started 2003. The more than 5,200 lorries per 24 hours is over 1,000 lorries more across the border on a daily basis than in the year of crisis 2009 and is comparable today to more than 2 million lorries driving into Denmark on an annual basis.

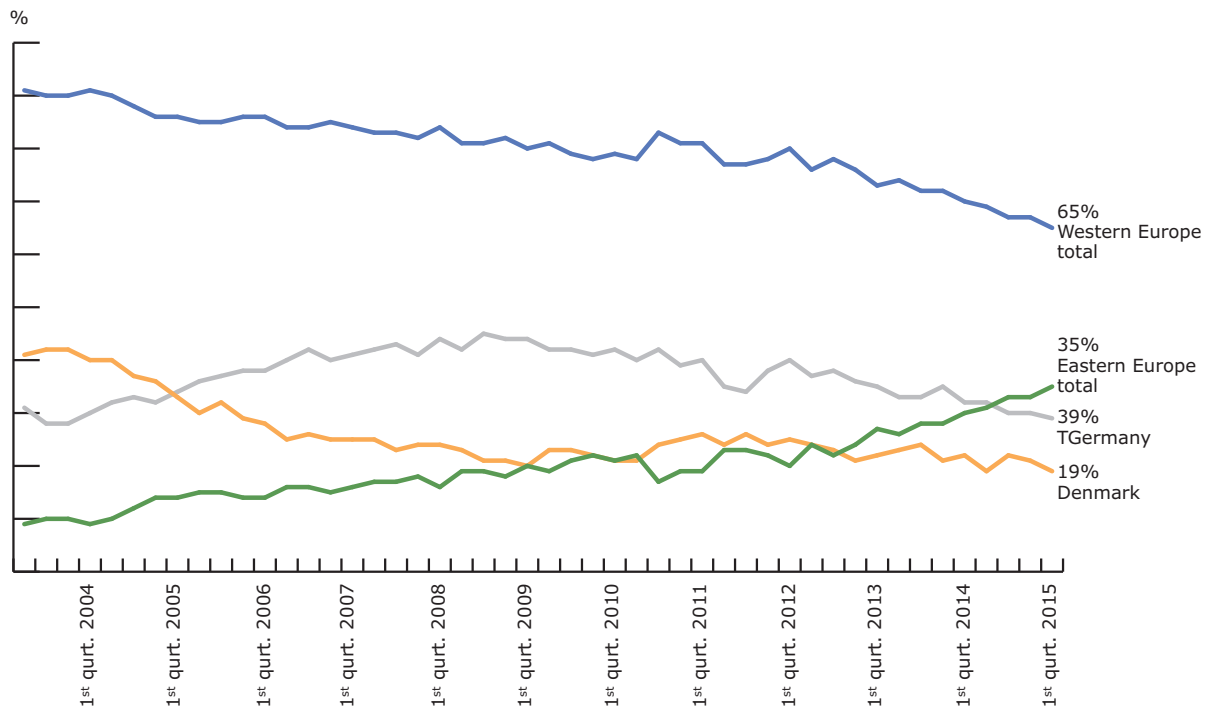
The trend has been increasing the past years, and much of the goods being carried

into Denmark is for processing in Danish manufacturing companies and for the industry. But the figures also show that Danish export hauliers continue to look into a tough European competitive market. ITD's border censuses demonstrate that today more than two thirds of the freight into Denmark is carried by foreign lorries.

While Danish export road hauliers fight hard for their market shares in the EU, ITD is pleased that Danish road hauliers domestically within Denmark borders, perform well.

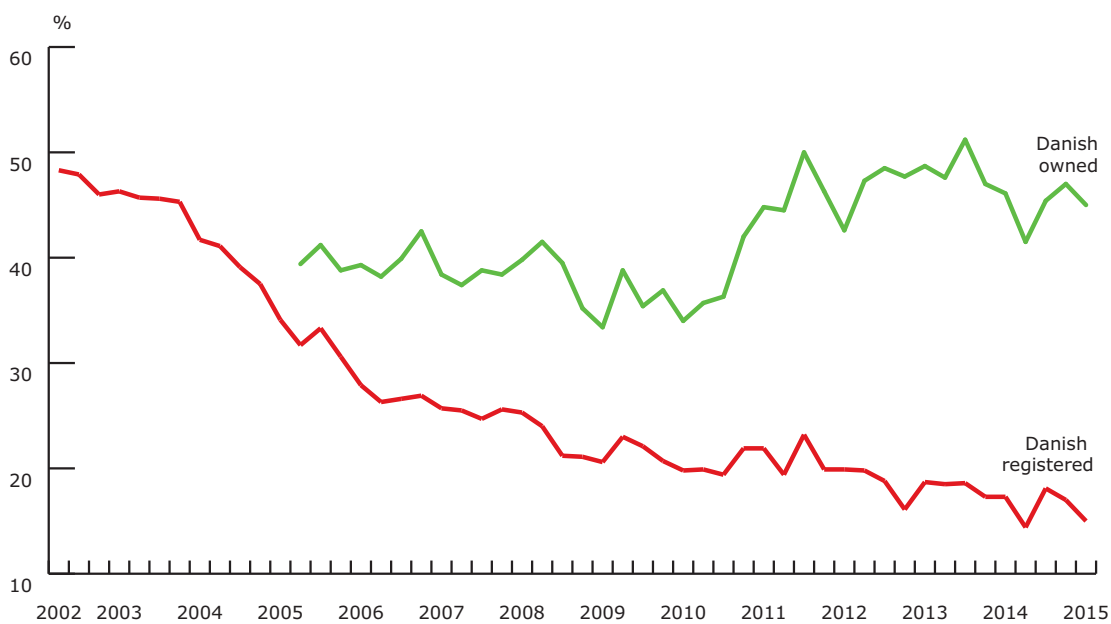
# Border census – lorry traffic into Denmark

## Nationality distribution



Note: Figures from South Jutland and Scandlines without the Øresund Bridge and the Kattegat, where the censuses are not divided into nationalities.

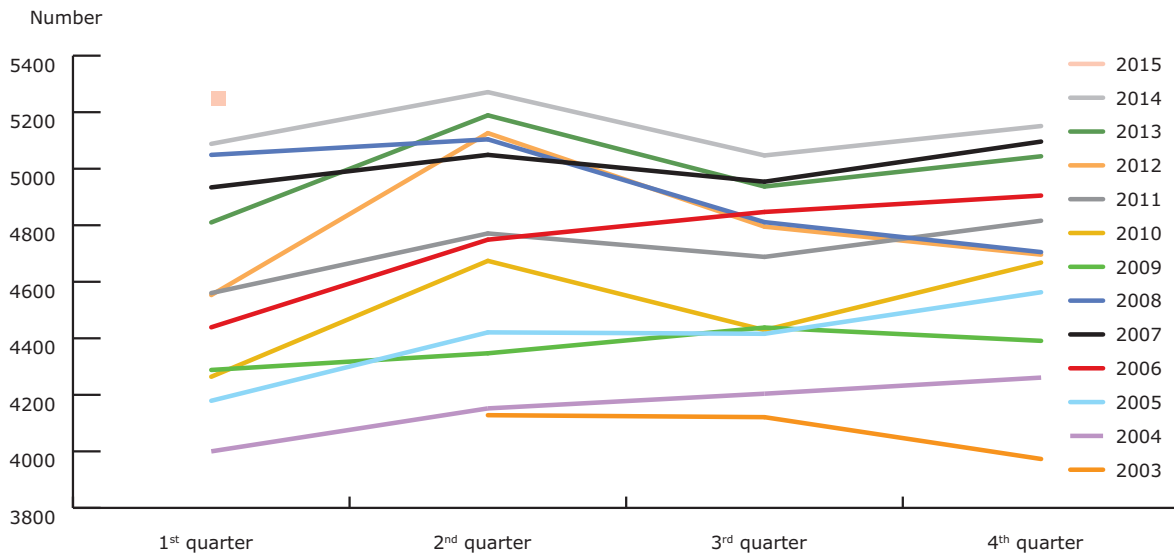
## Danish owned lorries, the share of all lorries crossing the Danish-German border in South Jutland



Note: The green figure shows the total share of Danish registered lorries as well as foreign registered lorries, which it has been possible in connection with the census to connect to Danish road haulage companies with subsidiaries abroad (logo and name on the driver's cabin)

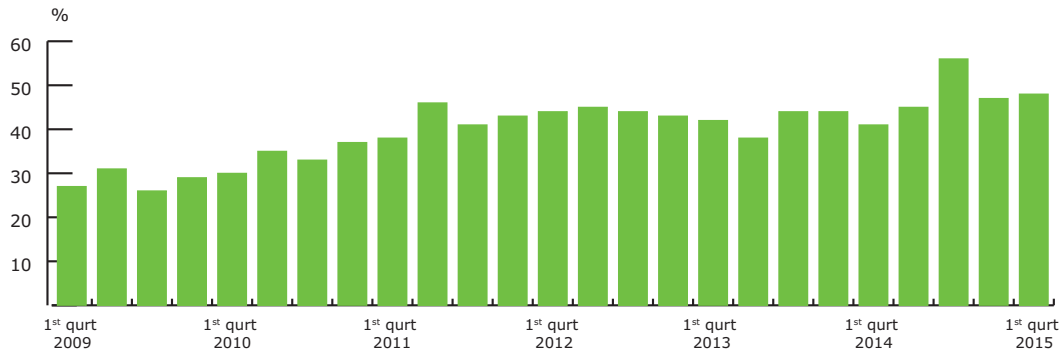
# Themes – based on partial results

## Quarterly comparison 2003-2015 country borders, Fehmarn and Øresund



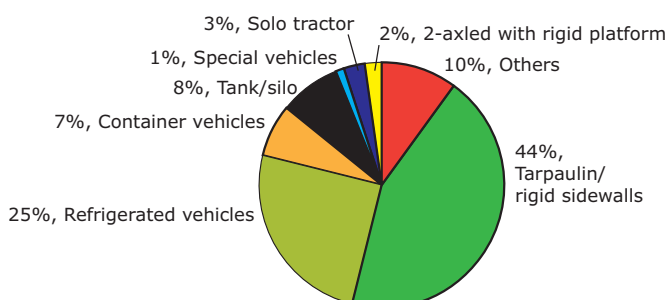
Note: Figures from South Jutland and Scandlines without the Øresund Bridge and the Kattegat.

## Lorries over 20 meters



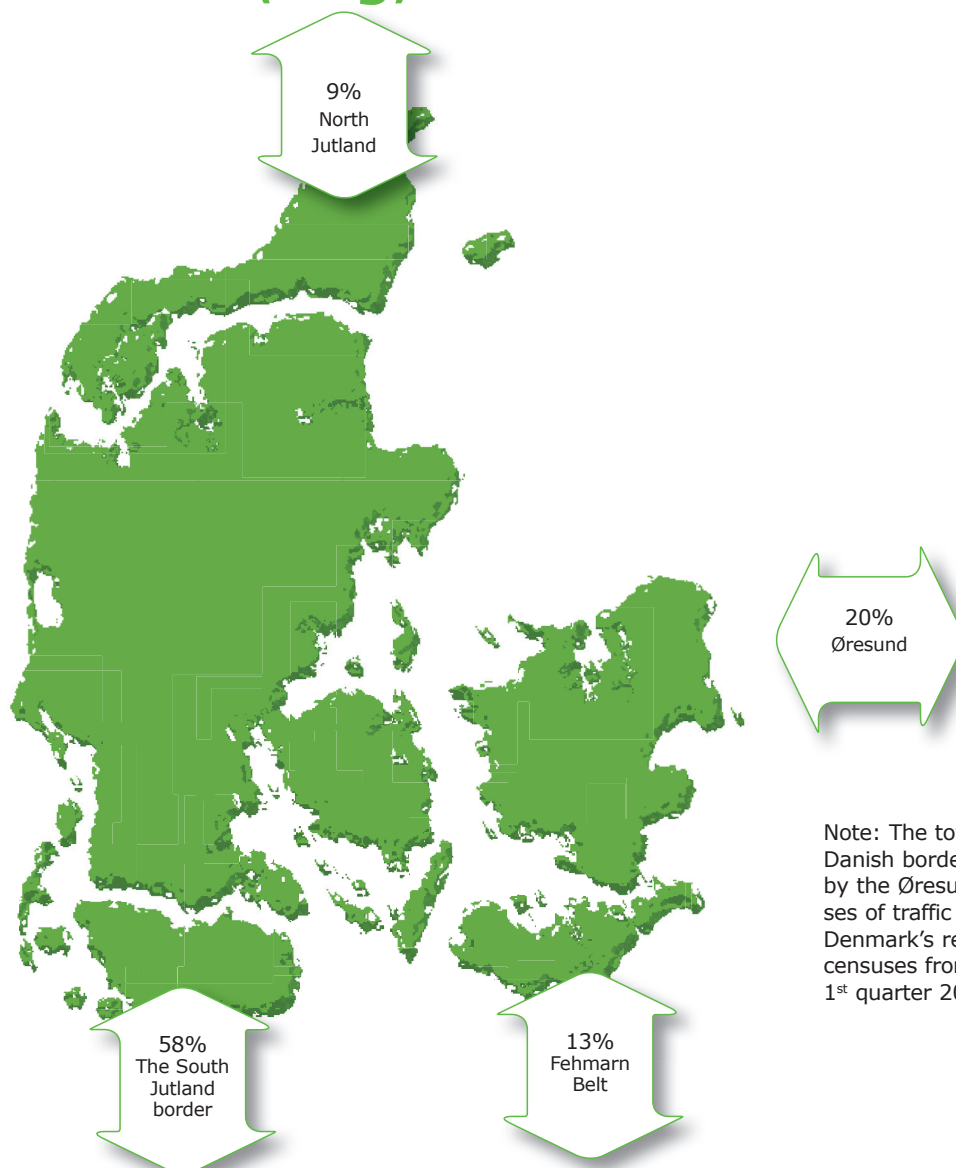
Note: On Scandlines A/S' ferry route between Helsingør and Helsingborg and on the Øresund Bridge separate registrations of lorries over 20 meters have been made – this means of modular road trains and special transports except automobile transports.

## Type of material 1<sup>st</sup> quarter 2015



Note: On the Danish border in South Jutland near Padborg and Frøslev separate registrations of type of material are made.

# Route distribution of lorry traffic in and out of Denmark (2015)



Note: The total figure includes censuses from the Danish border in South Jutland, complemented by the Øresund Bridge Consortium's own censuses of traffic on the Øresund Bridge and Statistics Denmark's reports on the ferry routes. The latest censuses from Statistics Denmark are from the 1<sup>st</sup> quarter 2015.

## Method

ITD's border censuses include lorries driving into Denmark across the Danish-German border and across the Øresund Bridge or using Scandlines' ferry routes. ITD records the number of lorries with a manual census every

quarter during a representative period totalling 24 hours. ITD's border censuses indicate the very latest tendencies in international lorry traffic to and from Denmark. The statistics can be used with caution to indicate export activities

and business environment in Denmark. Read more about the method, and see background tables on [www.itd.dk](http://www.itd.dk) under the menu Branchen.

Publication



**Trade association  
for the Danish road  
transport of goods**

Lyren 1 . DK-6330 Padborg  
Tel. +45 7467 1233  
itd@itd.dk . [www.itd.dk](http://www.itd.dk)

**Composition:** Transeco<sub>2</sub>  
**Layout:** ITD – Trade Association for the Danish Road Transport of Goods

© ITD – Trade Association for the Danish Road Transport of Goods

*Data, text, figures and/or tables may only be used by stating the source.*