

## 3<sup>rd</sup> quarter 2014

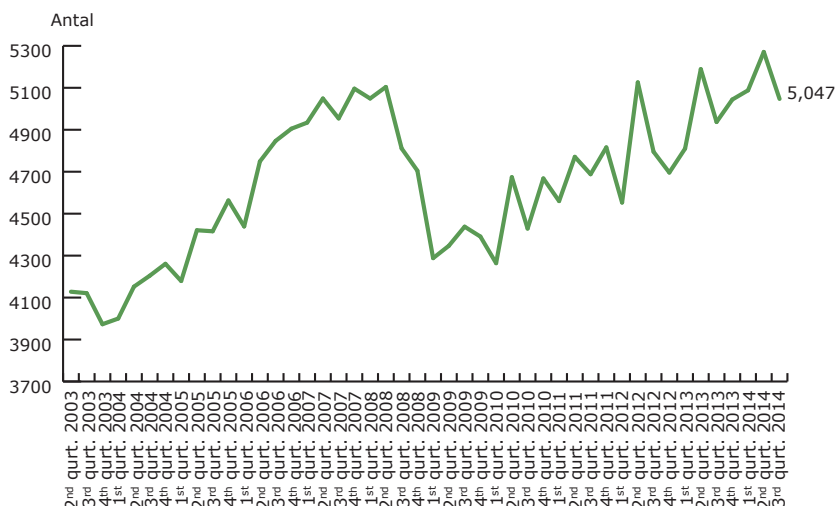
### Contents

Border census – lorry traffic to Denmark

Themes – based on partial results

Route distribution of lorry traffic in and out of Denmark

## Lorries into Denmark per day



# BORDER CENSUS

## The goods race across the borders

**Import and export by lorry has reached a historical high level during the first three quarters 2014.**

5,047 lorries crossed the borders in both directions during the third quarter of the year. This is the highest figure ever registered for a third quarter during the eleven years ITD has made censuses. The two first censuses of the year showed similar records.

On EU level about 50 percent of the transport of goods is being performed by lorry between the countries.

ITD is also watching the nationality of the lorries driving out and in of the country. Here the German lorries are still in the lead, but several Eastern European countries are crowing – i.e. Poland, Lithuania, Bulgaria and Romania. Adding all the Eastern European countries together, they have now a larger share than German lorries in the border crossing traffic out and in of Denmark.

The Danish export lorries are stabilized on a total share of 22 per cent of the border traffic. In the beginning of the millennium the Danish vehicles had a share of over 40 per cent of the international goods traffic out and in of the country.

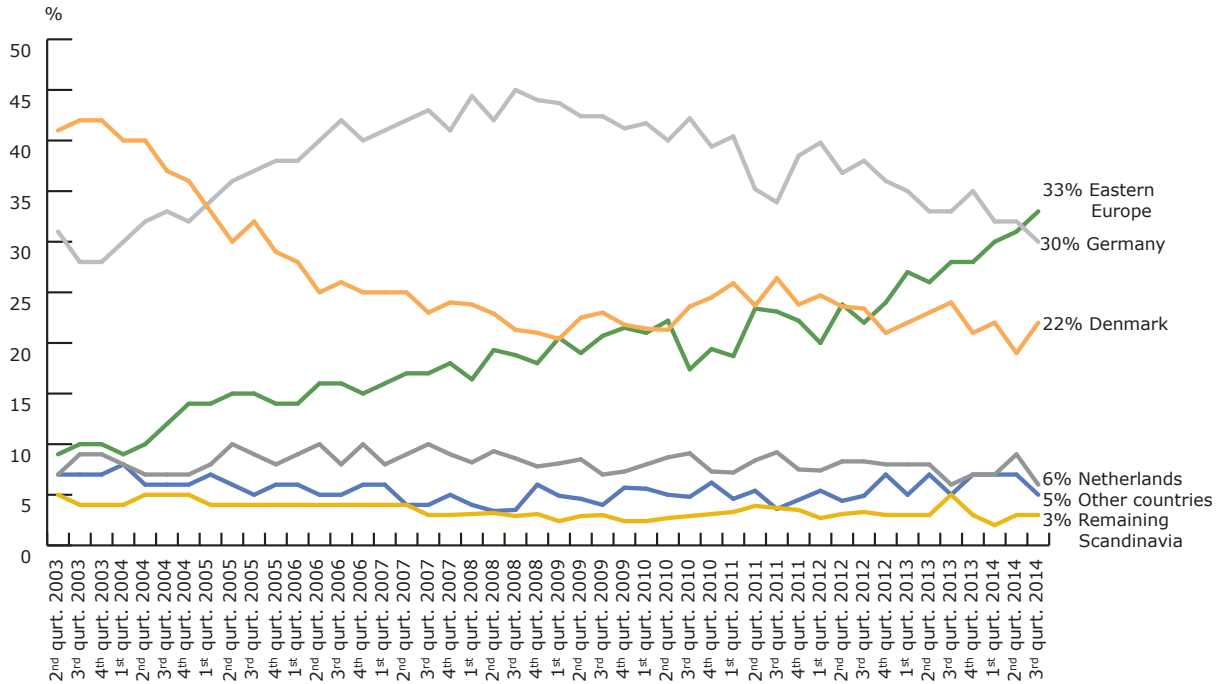
Since then, especially on the southbound routes the Danish lorries have been out-competed by lorries from other countries. On the other hand, in recent years Danish lorries have gained ground in Norway and Sweden. This is the reason that the total share of Danish lorries is relatively stable.

### ITD

Lyren 1 . DK-6330 Padborg  
Tel. +45 7467 1233  
Fax +45 7467 4317  
itd@itd.dk . www.itd.dk

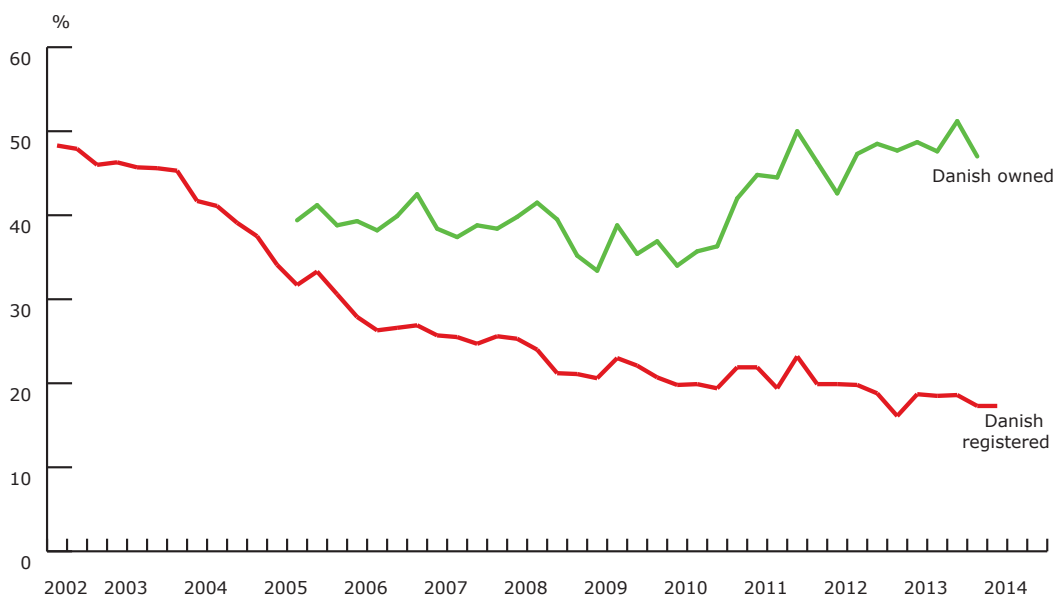
# Border census – lorry traffic into Denmark

## Nationality distribution



Note: Figures from South Jutland and Scandlines without the Øresund Bridge and the Kattegat, where the censuses are not divided into nationalities.

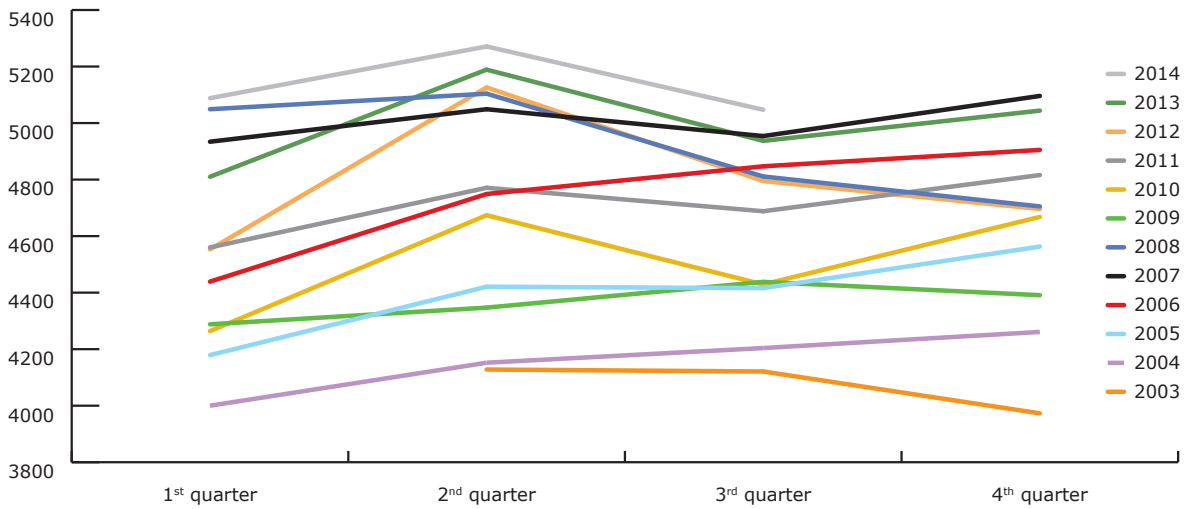
## Danish owned lorries, the share of all lorries crossing the Danish-German border in South Jutland



Note: The green figure shows the number of Danish registered lorries as well as foreign registered lorries, which it has been possible in connection with the census to connect to Danish road haulage companies with subsidiaries abroad (logo and name on the driver's cabin).

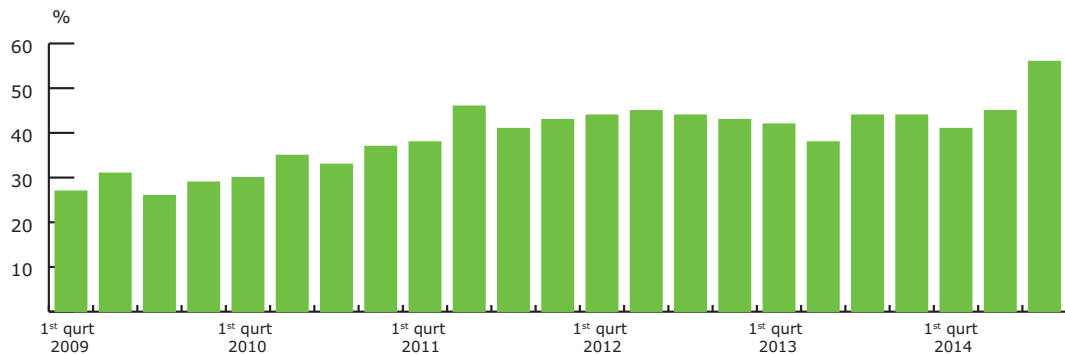
# Themes – based on partial results

## Quarterly comparison 2003-2011 country borders, Fehmarn and Øresund



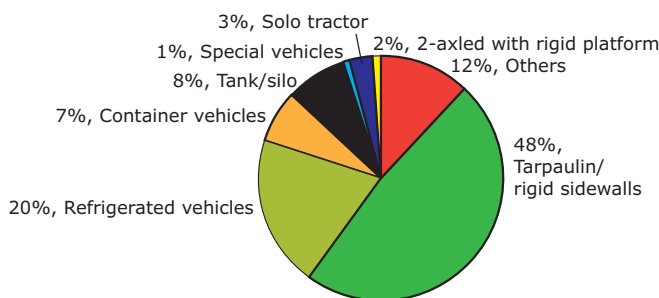
Note: Figures from South Jutland and Scandlines without the Øresund Bridge and the Kattegat.

## Lorries over 20 meters



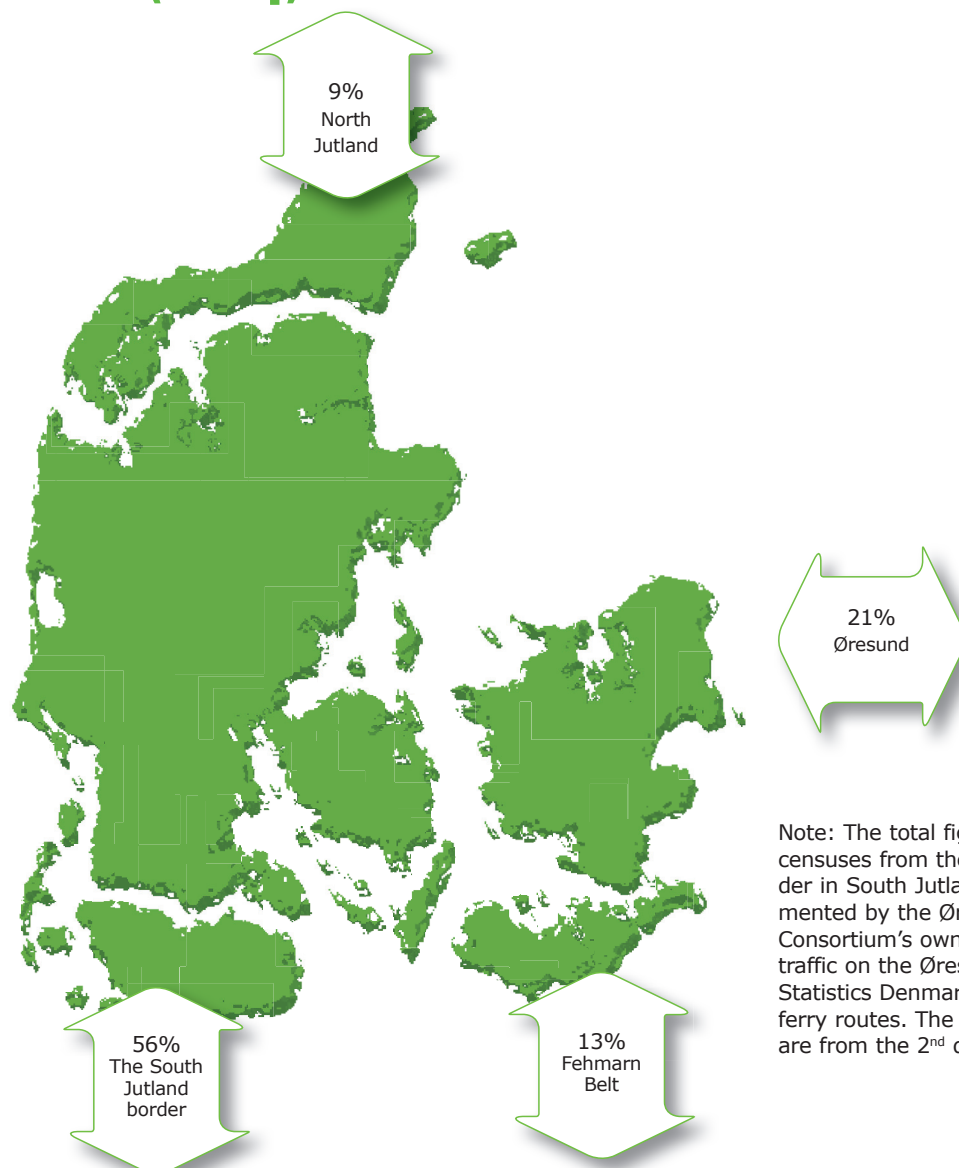
Note: On Scandlines A/S' ferry route between Helsingør and Helsingborg and on the Øresund Bridge separate registrations of lorries over 20 meters have been made – this means of modular road trains and special transports except automobile transports.

## Type of material 3<sup>rd</sup> quarter 2014



Note: On the Danish border in South Jutland near Padborg and Frøslev separate registrations of type of material are made.

# Route distribution of lorry traffic in and out of Denmark (2014)



Note: The total figure includes censuses from the Danish border in South Jutland, complemented by the Øresund Bridge Consortium's own censuses of traffic on the Øresund Bridge and Statistics Denmark's reports on ferry routes. The latest censuses are from the 2<sup>nd</sup> quarter 2014.

## Method

ITD's border censuses include lorries driving into Denmark across the Danish-German border and across the Øresund Bridge or using Scandlines A/S' ferry routes. ITD records the number of lorries with a manual cen-

sus every quarter during a representative period totalling 24 hours. ITD's border censuses indicate the very latest tendencies in international lorry traffic to and from Denmark. The statistics can be used with cau-

tion to indicate export activities and business environment in Denmark. Read more about the method, and see background tables on [www.itd.dk](http://www.itd.dk) under the menu "Branchen".

### PUBLICATION



**Trade Association  
for the Danish Road Transport of Goods**

Lyren 1 . DK-6330 Padborg  
Tel. +45 7467 1233 . Fax +45 7467 4317  
[itd@itd.dk](mailto:itd@itd.dk) . [www.itd.dk](http://www.itd.dk)

**Composition:** Transeco<sub>2</sub>  
**Layout:** ITD – Trade Association for the  
Danish Road Transport of Goods

© ITD – Trade Association for the Danish Road  
Transport of Goods  
*Data, text, figures and/or tables may only be used  
by stating the source.*