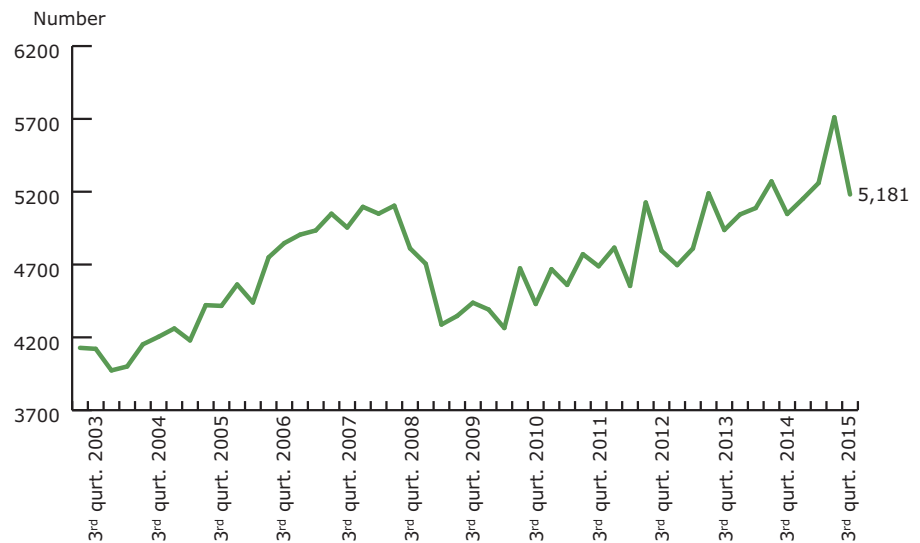


3rd quarter 2015

Contents

- Border census
– lorry traffic to Denmark
- Themes
– based on partial results
- Route distribution of lorry traffic in and out of Denmark

Lorries into Denmark per day



BORDER CENSUS



**Association for
the Danish road
transport of goods**

+45 7467 1233
itd.dk

Continued growth in international lorry transport

International road transport of goods continues to grow. 5,181 lorries per day drove across the Danish borders during third quarter 2015 against 5,047 in the same quarter 2014.

The development within lorry transports driving into Denmark shows an increase the past year. Thus, the number of transports increased from 3rd quarter 2014 to 3rd quarter 2015 by 2.7 per cent. The association for Danish road transport of goods, ITD, is optimistic in relation to the market's development and the industry's importance to the Danish export of goods and products.

New development within the international lorry traffic

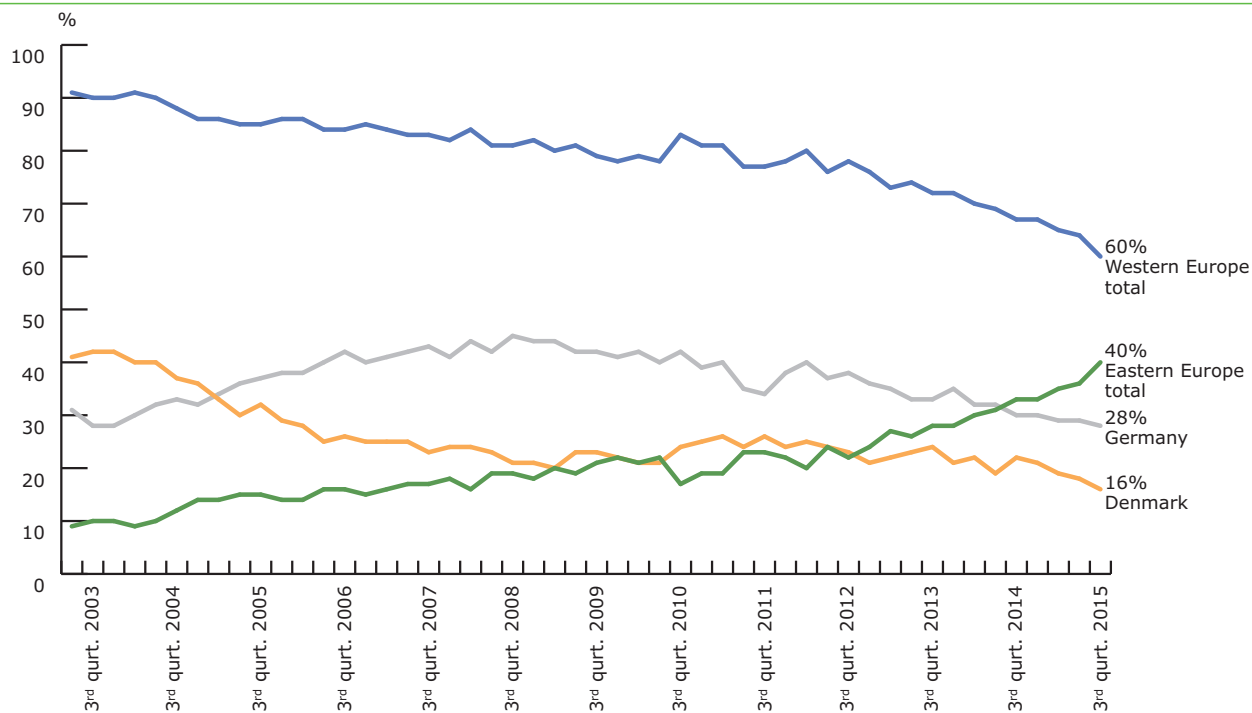
The development within the international lorry traffic shows new trends in the international transport market. ITD's border censuses

state that more Eastern European lorries cross the border, especially Polish lorries. Where the number of lorries registered in Western Europe the past years kept same level the number for 3rd quarter has now decreased significantly. Whether it is a future trend is too early to predict according to ITD.

Part of the explanation to the shifting could possibly assign to the recruiting problems on the road haulage market in Western Europe. Denmark is not the only country having difficulties obtaining and recruiting sufficient qualified drivers for the sector, also Germany fights with these challenges.

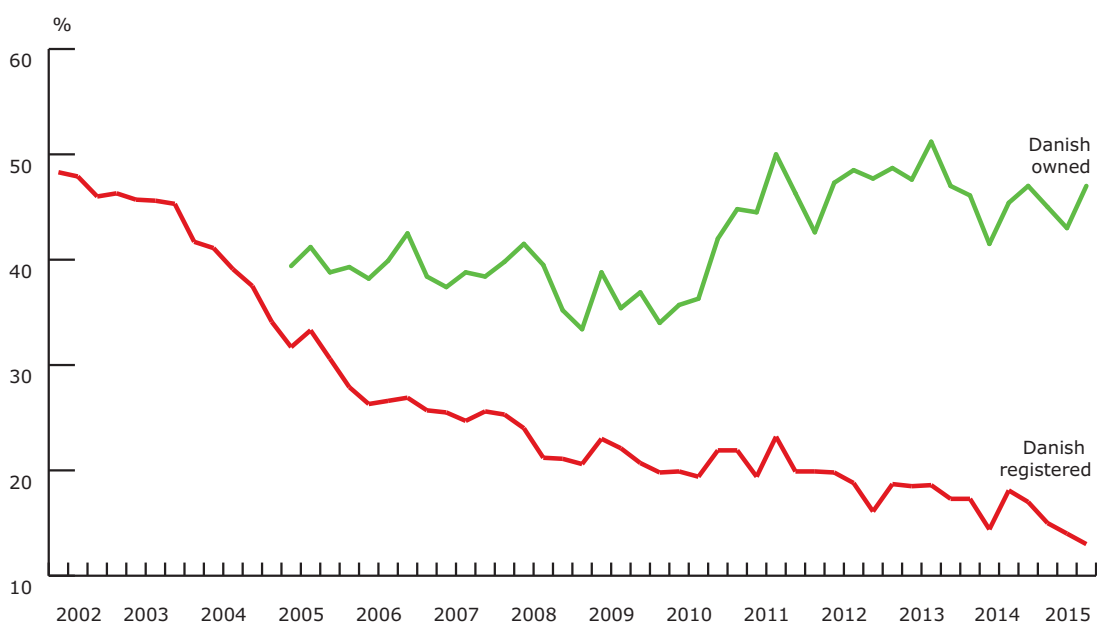
Border census – lorry traffic into Denmark

Nationality distribution



Note: Figures from South Jutland and Scandlines without the Øresund Bridge and the Kattegat, where the censuses are not divided into nationalities.

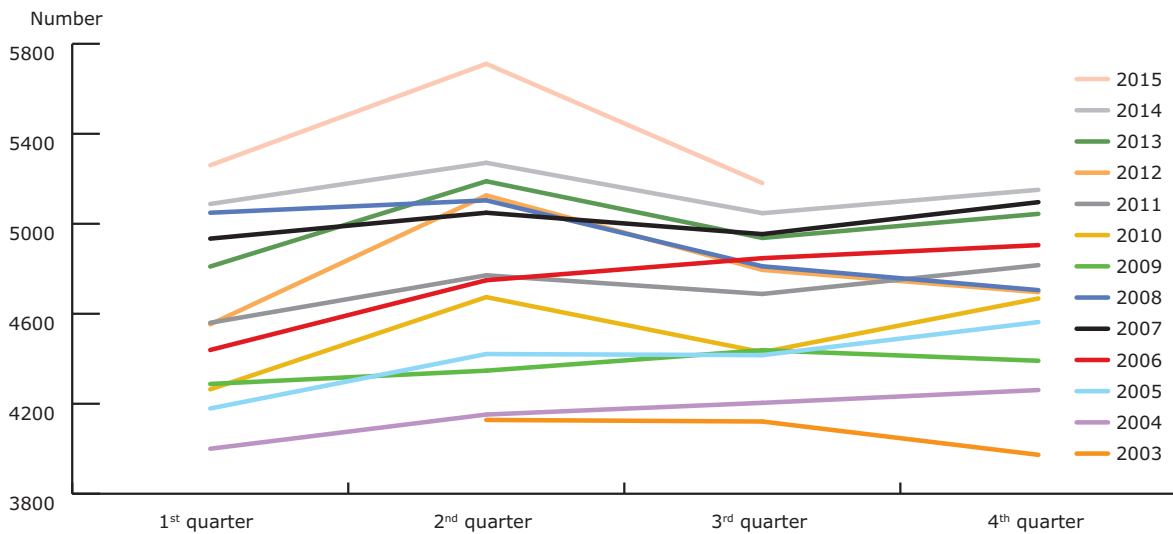
Danish owned lorries, the share of all lorries crossing the Danish-German border in South Jutland



Note: The green figure shows the total share of Danish registered lorries as well as foreign registered lorries, which it has been possible in connection with the census to connect to Danish road haulage companies with subsidiaries abroad (logo and name on the driver's cabin)

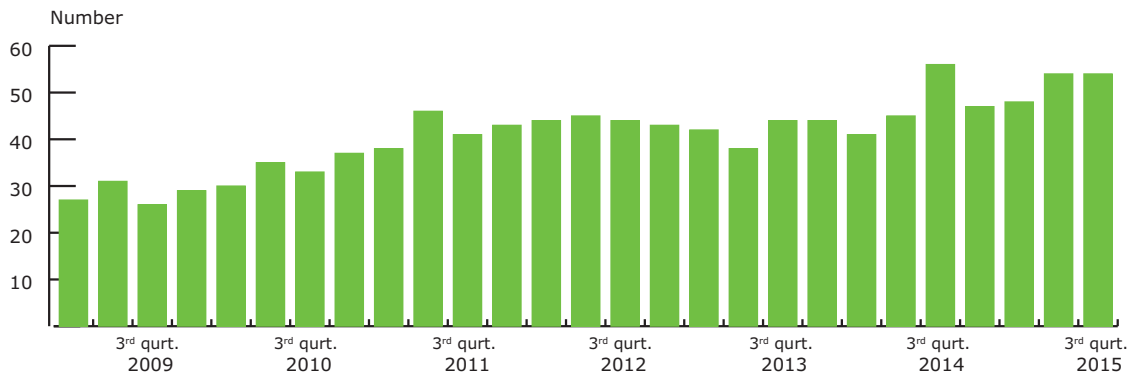
Themes – based on partial results

Quarterly comparison 2003-2015 country borders, Fehmarn and Øresund



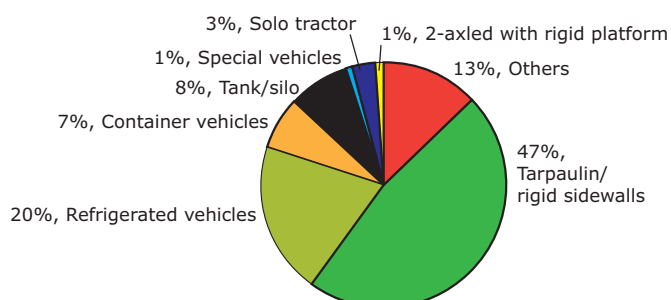
Note: Figures from South Jutland and Scandlines without the Øresund Bridge and the Kattegat.

Lorries over 20 meters



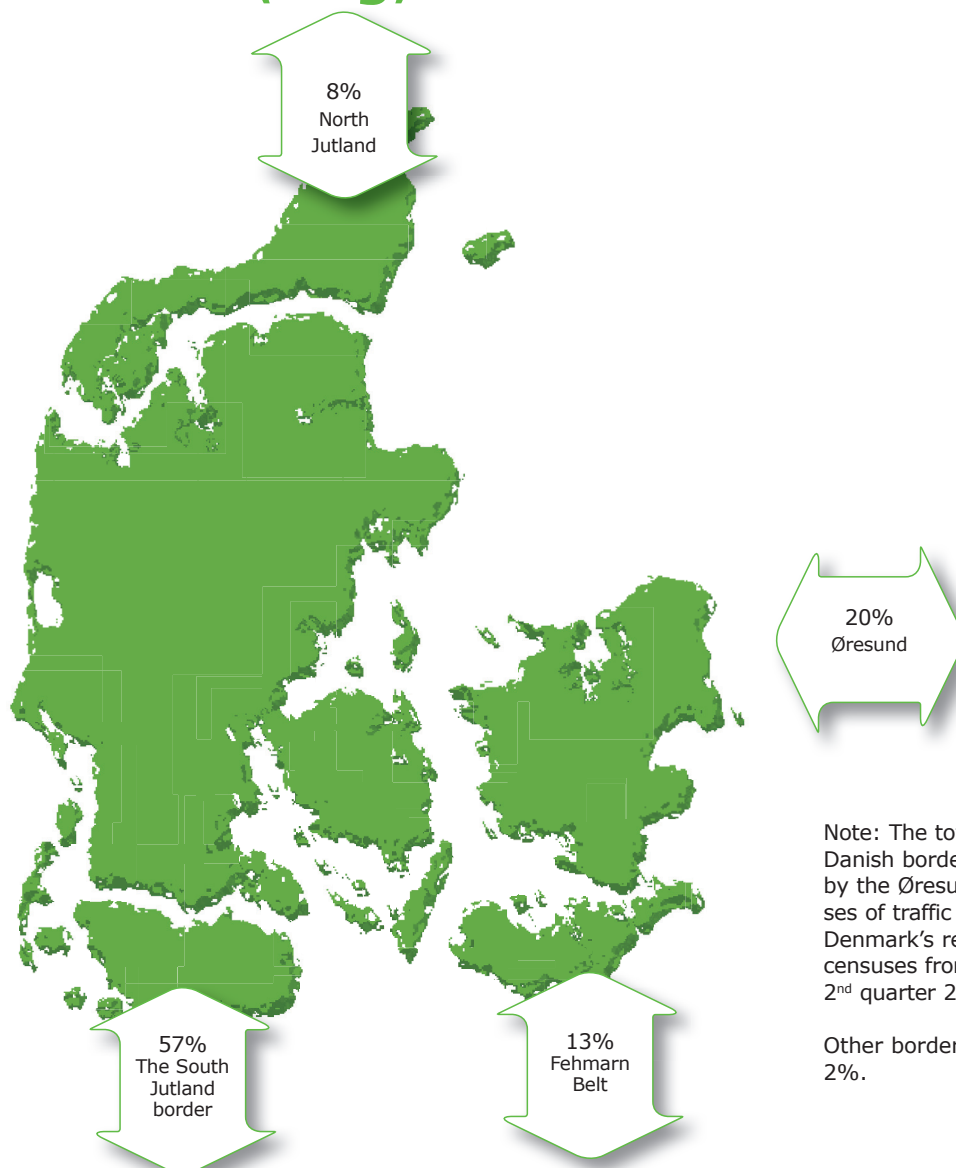
Note: On Scandlines A/S' ferry route between Helsingør and Helsingborg and on the Øresund Bridge separate registrations of lorries over 20 meters have been made – this means of modular road trains and special transports except automobile transports.

Type of material 3rd quarter 2015



Note: On the Danish border in South Jutland near Padborg and Frøslev separate registrations of type of material are made.

Route distribution of lorry traffic in and out of Denmark (2015)



Note: The total figure includes censuses from the Danish border in South Jutland, complemented by the Øresund Bridge Consortium's own censuses of traffic on the Øresund Bridge and Statistics Denmark's reports on the ferry routes. The latest censuses from Statistics Denmark are from the 2nd quarter 2015.

Other border crossings account for just over 2%.

Method

ITD's border censuses include lorries driving into Denmark across the Danish-German border and across the Øresund Bridge or using Scandlines' ferry routes. ITD records the number of lorries with a manual census every

quarter during a representative period totalling 24 hours. ITD's border censuses indicate the very latest tendencies in international lorry traffic to and from Denmark. The statistics can be used with caution to indicate export activities

and business environment in Denmark. Read more about the method, and see background tables on www.itd.dk under the menu "Branchen".

Publication



**Association for
the Danish road
transport of goods**

Lyren 1 . DK-6330 Padborg
Tel. +45 7467 1233
itd@itd.dk . www.itd.dk

Composition: Transeco₂

Layout: ITD, Association for the Danish road transport of goods

© ITD, Association for the Danish road transport of goods

Data, text, figures and/or tables may only be used by stating the source.