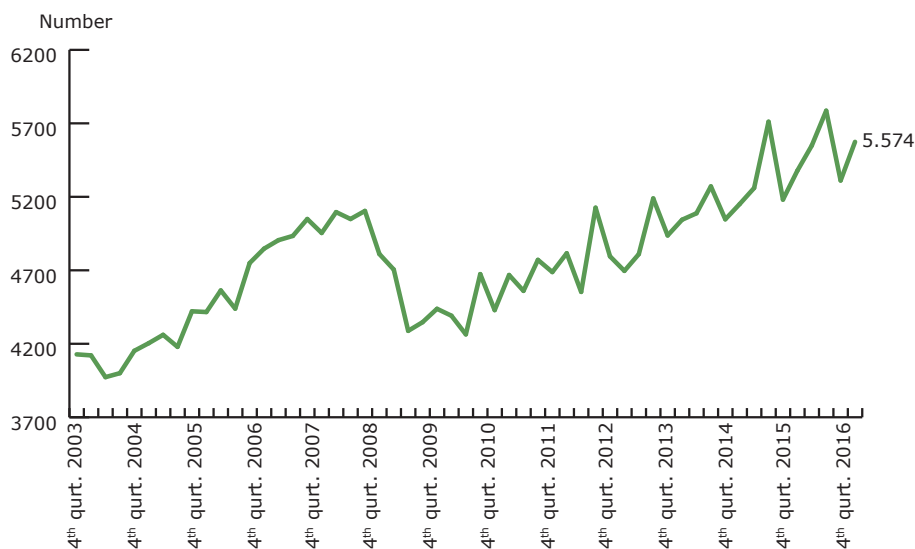


## 4<sup>th</sup> quarter 2016

### Contents

- Border census
  - lorry traffic to Denmark
- Themes
  - based on partial results
- Route distribution of lorry traffic in and out of Denmark

## Lorries across the borders in South Jutland, Fehmarn Belt and Øresund towards Denmark



# BORDER CENSUS



+45 7467 1233  
itd.dk

## Never before have so many trucks crossed the border in one year

Serious truck traffic is rolling across the Danish borders. 5,574 trucks drove per day in fourth quarter 2016 across the Danish borders. With an average of 5,555 vehicles per day for whole 2016, ITD's Border Censuses show that truck traffic has increased by almost 550 trucks per day since 2007, shortly after the financial crisis.

Referring to fourth quarter 2015, traffic across Øresund Bridge, Scanlines' and HH Ferries' routes as well as the border in South Jutland has risen by 3.6 per cent. Growth in the international truck traffic to Denmark is a good indicator for the economic trends and so a clear proof of the road transport of goods contributing to keep Denmark and Europe running.

### Slowdown in Eastern growth

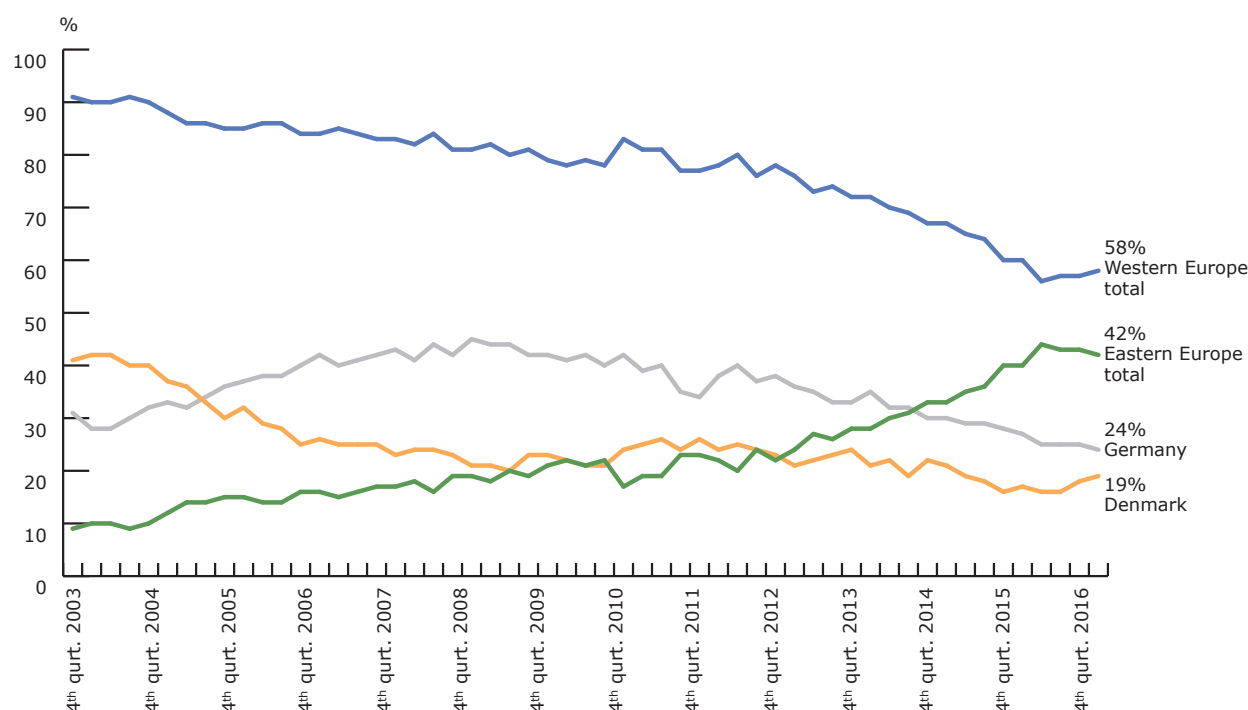
The growth in market shares for the Eastern European registered trucks seems simultaneously to have stagnated throughout 2016. The market share for trucks from Eastern Europe is still high and was in whole 2016 continuous about five per cent over the 2015 level. Danish trucks' market share amounted to 19 per cent in fourth quarter 2016 which implies two per cent higher than the same quarter 2015, and for whole 2016 the market share was the same as the year before.

The market share for the Eastern European trucks amounted to 42 per cent in fourth quarter 2016, while Western European trucks had a market share of 58 per cent.

Since the second quarter 2002, ITD has performed border censuses of road transport of goods into Denmark.

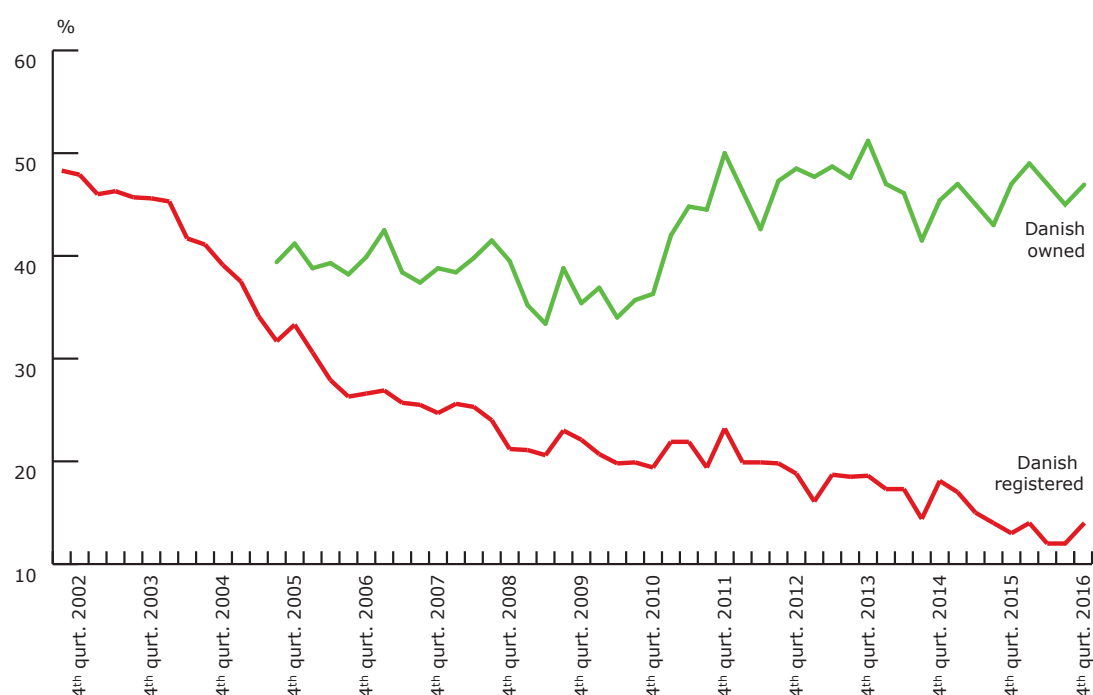
# Border census – lorry traffic into Denmark

## Nationality distribution of the lorry traffic towards Denmark across the borders in South Jutland, Øresund and Fehmarn Belt



Note: Figures from South Jutland, HH Ferries and Scandlines without the Øresund Bridge and the Kattegat, where the censuses are not divided into nationalities.

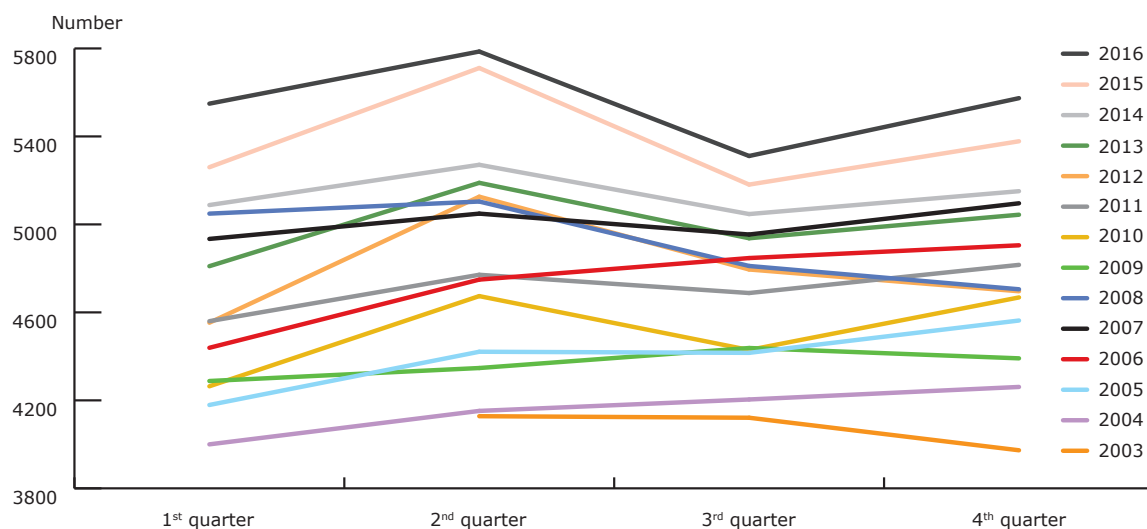
## Danish owned lorries towards Denmark across the South Jutland border. Share of total traffic



Note: The green figure shows the total share of Danish registered lorries as well as foreign registered lorries, which it has been possible in connection with the census to connect to Danish road haulage companies with subsidiaries abroad (logo and name on the driver's cabin).

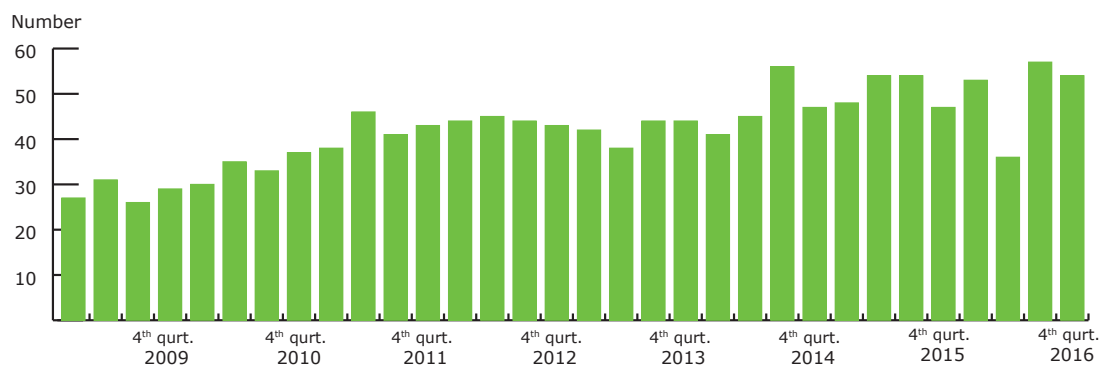
# Themes – based on partial results

## Number of lorries towards Denmark across borders in South Jutland, Øresund and Fehmarn Belt. Number of lorries per day



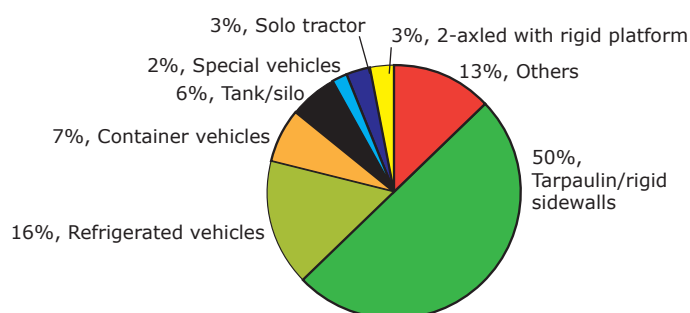
Note: Figures from South Jutland, Scandlines and HH Ferries without the Øresund Bridge and the Kattegat.

## Lorries over 20 meters



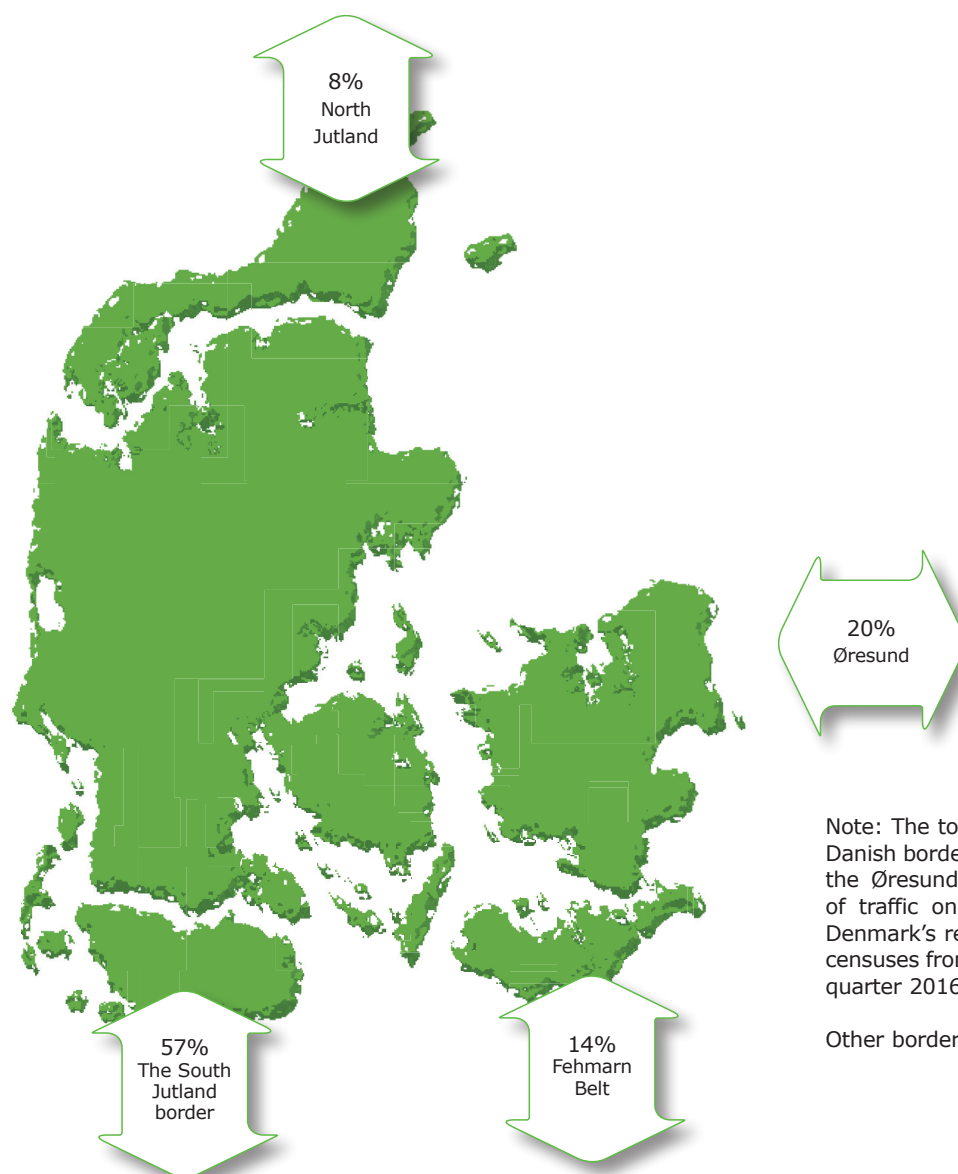
Note: On HH Ferries' route between Helsingør and Helsingborg and on the Øresund Bridge separate registrations of lorries over 20 meters have been made – this means of modular road trains and special transports except automobile transports.

## Type of material 4<sup>th</sup> quarter 2016



Note: On the Danish border in South Jutland near Padborg and Frøslev, separate registrations of type of material are made.

# Route distribution of lorry traffic in and out of Denmark (3<sup>rd</sup> quarter 2016)



Note: The total figure includes censuses from the Danish border in South Jutland, complemented by the Øresund Bridge Consortium's own censuses of traffic on the Øresund Bridge and Statistics Denmark's reports on the ferry routes. The latest censuses from Statistics Denmark are from the 3<sup>rd</sup> quarter 2016.

Other border crossings account for just over 1%.

## Method

ITD's border censuses include lorries driving into Denmark across the Danish-German border and across the Øresund Bridge or using Scandlines' ferry and HH Ferries' routes. ITD records the number of lorries with a

manual census every quarter during a representative period totalling 24 hours. ITD's border censuses indicate the very latest tendencies in international lorry traffic to and from Denmark.

The statistics can be used with caution to indicate export activities and business environment in Denmark. Find a detailed review of the statistics on [www.itd.dk](http://www.itd.dk).

### Publication



Lyren 1 . DK-6330 Padborg  
Tel. +45 7467 1233  
[itd@itd.dk](mailto:itd@itd.dk) . [www.itd.dk](http://www.itd.dk)

**Composition:** transEco<sub>2</sub>

**Layout:** ITD, Association for the Danish road transport of goods

© ITD, Association for the Danish road transport of goods

*Data, text, figures and/or tables may only be used by stating the source.*