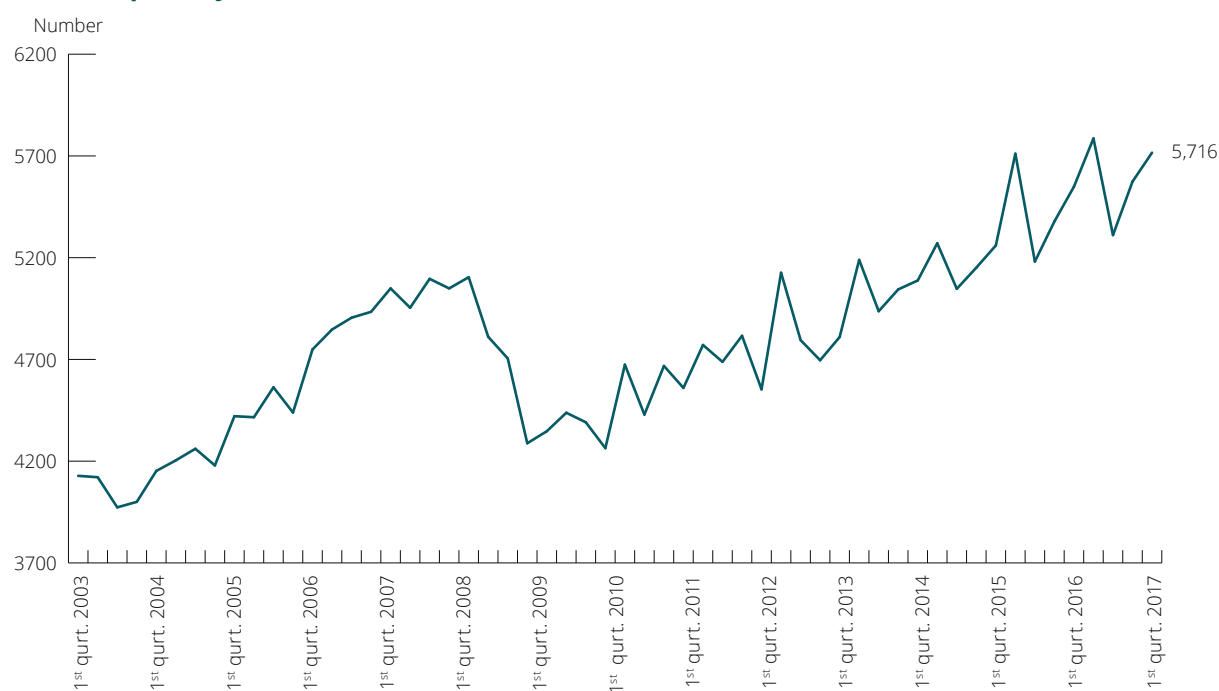




# BORDER CENSUS

1<sup>st</sup> quarter 2017

## ► Trucks per day across the borders in South Sjutland, Fehmarn Belt and Øresund towards Denmark



## CONTINUED RISE IN THE NUMBER OF TRUCK TRANSPORTS

There is continued growth in the number of truck transports across the Danish borders. Thus, 5,716 trucks crossed the borders on a daily basis during the 1<sup>st</sup> quarter 2017. The positive development from the last years' censuses of the truck traffic shows conclusively that the market is growing. A development covering both import and export of goods.

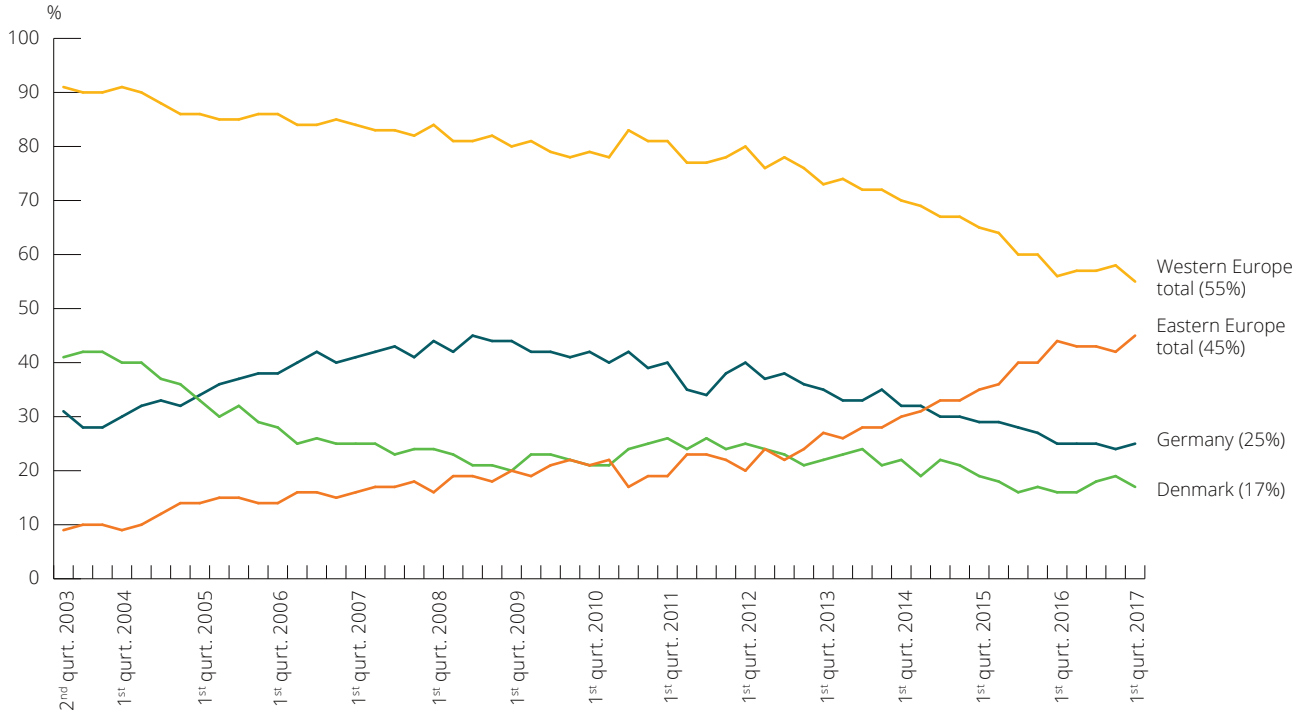
Alone border crossings in South Jutland account for over 60 per cent of the truck transports into Denmark. So, 3,530 trucks crossed the South Jutland border during 1<sup>st</sup> quarter 2017.

Since the second quarter 2002, ITD has performed border censuses of road transport of goods into Denmark.

# BORDER CENSUS

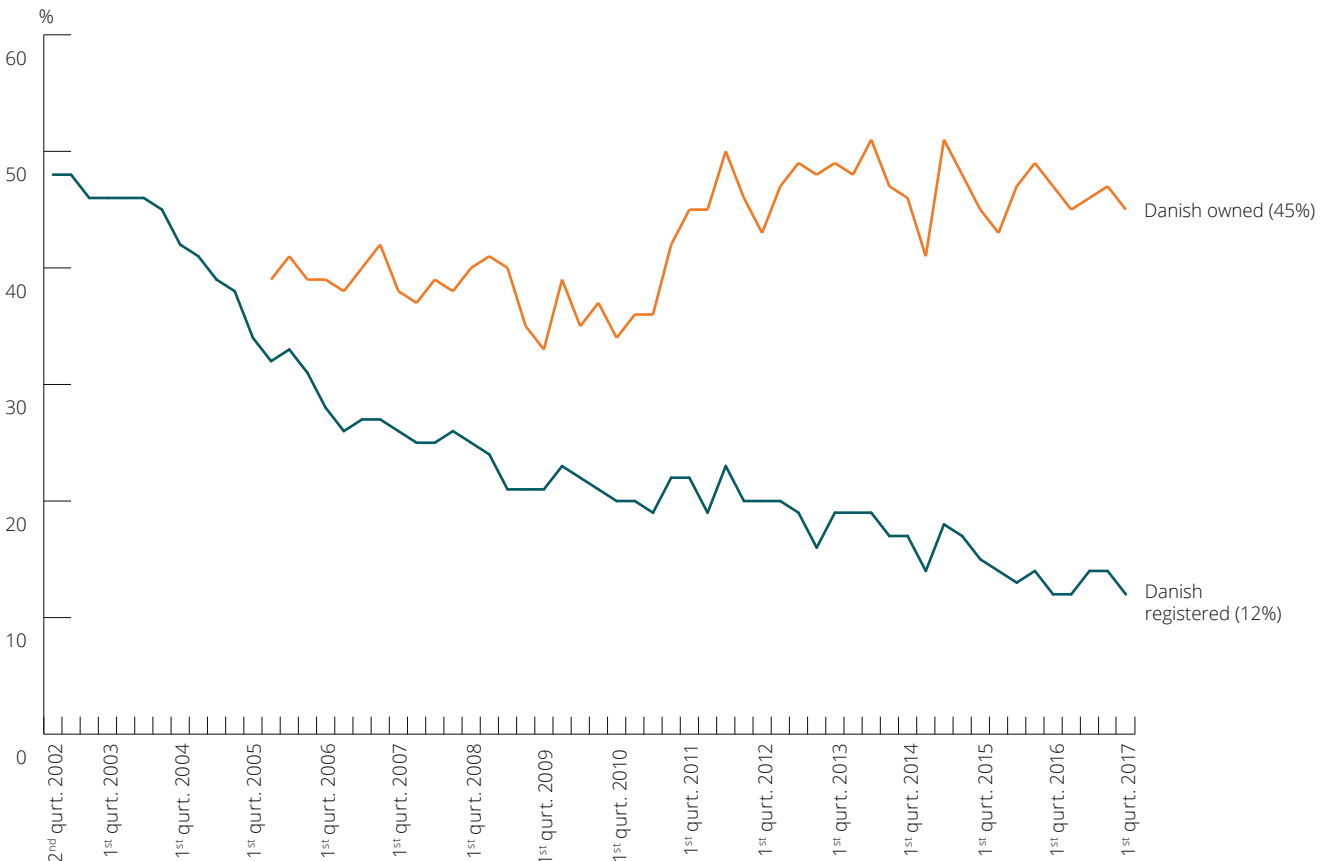
## – TRUCK TRAFFIC INTO DENMARK

### ► Nationality distribution of the truck traffic towards Denmark across the borders in South Jutland, Øresund and Fehmarn Belt



Note: Figures from South Jutland, HH Ferries and Scandlines without the Øresund Bridge and the Kattegat, where the censuses are not divided into nationalities.

### ► Danish owned trucks towards Denmark across the South Jutland border. Share of total traffic

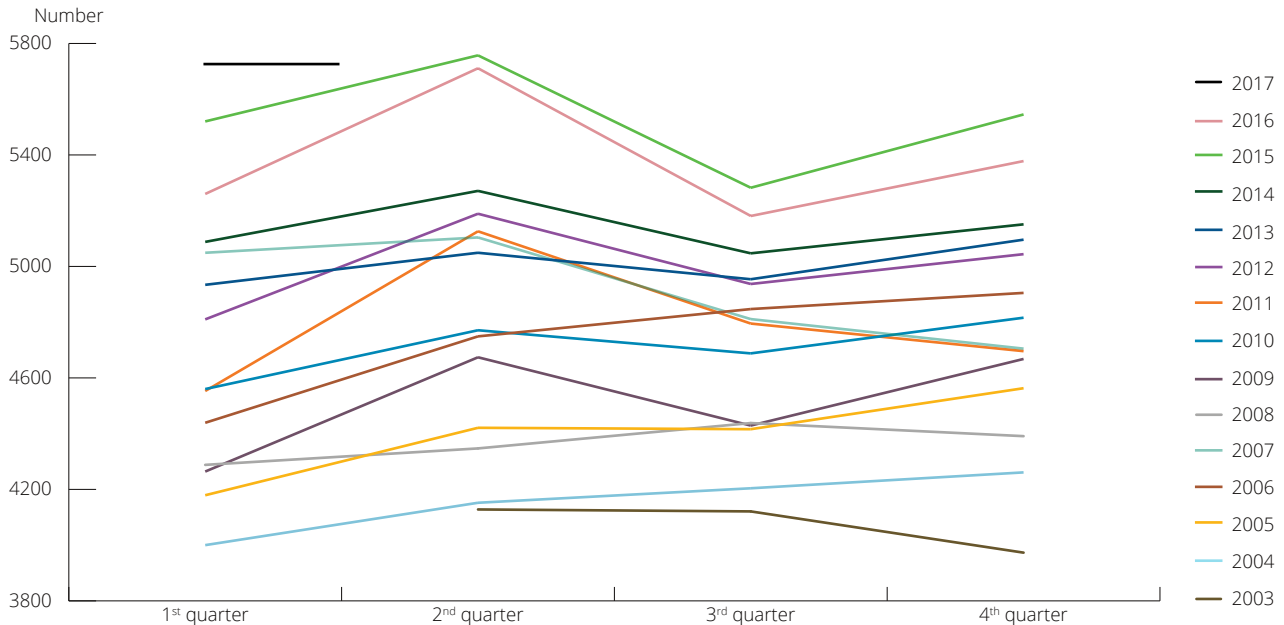


Note: The orange figure shows the total share of Danish registered trucks as well as foreign registered trucks, which it has been possible in connection with the census to connect to Danish road haulage companies with subsidiaries abroad (logo and name on the driver's cabin).

# THEMES

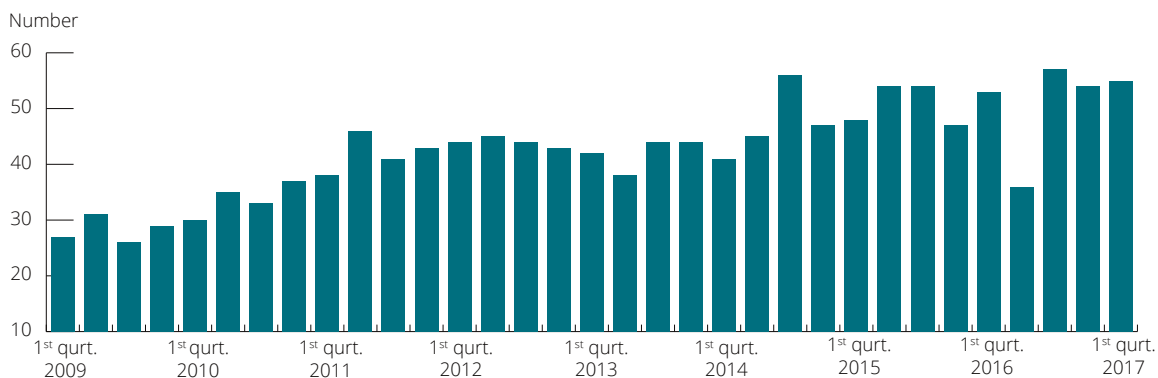
## - BASED ON PARTIAL RESULTS

### ► Number of trucks towards Denmark across borders in South Jutland, Øresund and Fehmarn Belt. Number of trucks per day



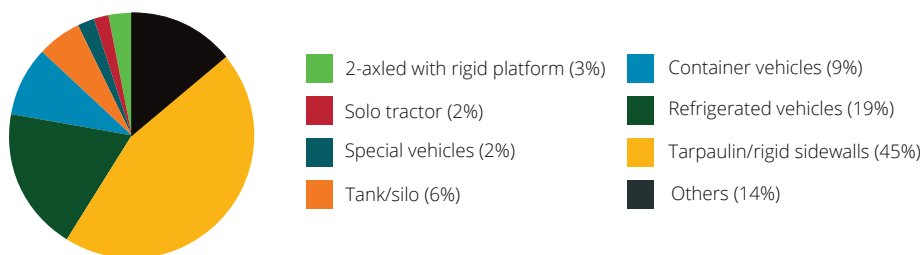
Note: Figures from South Jutland, Scandlines and HH Ferries without the Øresund Bridge and the Kattegat.

### ► Trucks over 20 meters



Note: On HH Ferries' route between Helsingør and Helsingborg and on the Øresund Bridge separate registrations of trucks over 20 meters have been made – this means of modular road trains and special transports except automobile transports.

### ► Type of material 1st quarter 2017



Note: On the Danish borders in South Jutland near Padborg and Frøslev, separate registrations of type of material are made.

# ROUTE DISTRIBUTION OF TRUCK TRAFFIC IN AND OUT OF DENMARK (4<sup>th</sup> quarter 2016)



North Jutland: 8%

Øresund: 20%

The South Jutland border: 57%

Fehmarn Belt: 14%

*Note: The total figure includes censuses from the Danish border in South Jutland, complemented by the Øresund Bridge Consortium's own censuses of traffic on the Øresund Bridge and Statistics Denmark's reports on the ferry routes. The latest censuses from Statistics Denmark are from the 4<sup>th</sup> quarter 2016.*

*Other border crossings account for just over 1%.*

## METHOD

ITD's border censuses include trucks driving into Denmark across the Danish-German border and across the Øresund Bridge or using Scandlines' ferry and HH Ferries' routes. ITD records the number of lorries with a manual census every quarter during a representative period totalling 24 hours.

ITD's border censuses indicate the very latest tendencies in international truck traffic to and from Denmark. The statistics can be used with caution to indicate export activities and business environment in Denmark.

Find a detailed review of the statistics on [www.itd.dk](http://www.itd.dk)



Lyren 1 | DK-6330 Padborg  
T: +45 7467 1233 | [itd@itd.dk](mailto:itd@itd.dk) | [www.itd.dk](http://www.itd.dk)

**Composition:** transEco<sub>2</sub>

**Layout:** ITD

© ITD, Association for the Danish road transport of goods  
*Data, text, figures and/or tables may only be used by stating the source.*