



BORDER CENSUS

3rd quarter 2017

ITD: GROWTH CONTINUES

The number of trucks rolling into Denmark is still record high. ITD's Border Census 3rd quarter 2017 shows 5,857 trucks driving on a daily basis across borders into Denmark. The high level is proof that growth in Europe goes continuously the right way, because more goods and more products must be carried across Europe. Only within the last year, truck traffic has increased by just over 10 per cent per day.

Despite a minor reduction in the number of trucks driving into Denmark during third quarter 2017, ITD's Border Census show for all three quarters 2017 that truck traffic into Denmark is on the highest level since the censuses started 2003.

The number is now 5,857 trucks per day. This is 124 trucks less per day compared to the census made second quarter 2017 where the total number of trucks per day amounted to 5,981.

Only within the last year (that is from third quarter 2016 until third quarter 2017), traffic has increased by over 10 per cent (10.3 per cent) or approximately 550 vehicles per direction per day. During third quarter 2016, the Border Census indicated that 5,311 trucks drove every day into Denmark across the borders.

- The number of trucks, daily crossing Denmark's borders, is still record high. This indicates that growth in Europe goes continuously the right way, because more goods and more products must be carried all over Europe. It also indicates that the capacity is pressed to the utmost.

When the wheels are turning and there is great financial activity, more must be transported. We hear from several of our members operating internationally, that they experience a lack of capacity on European vehicles, where many contracts with subcontractors are being terminated, says Carina Christensen, CEO at ITD.

The border in South Jutland is still Denmark's largest international border for truck traffic. From a total of 5,857 trucks crossing the the Danish border on a daily basis, a total of 3,533 trucks drive across the South Jutland border. This is an increase of six per cent the past year. The largest growth, however, has been on Øresund and Fehmarn Belt. Fehmarn Belt has growth of 26 per cent in the number of trucks per day since third quarter 2016.

GROWTH IN THE NUMBER OF TRUCKS PER DAY AND DIRECTION SINCE THIRD QUARTER 2016:

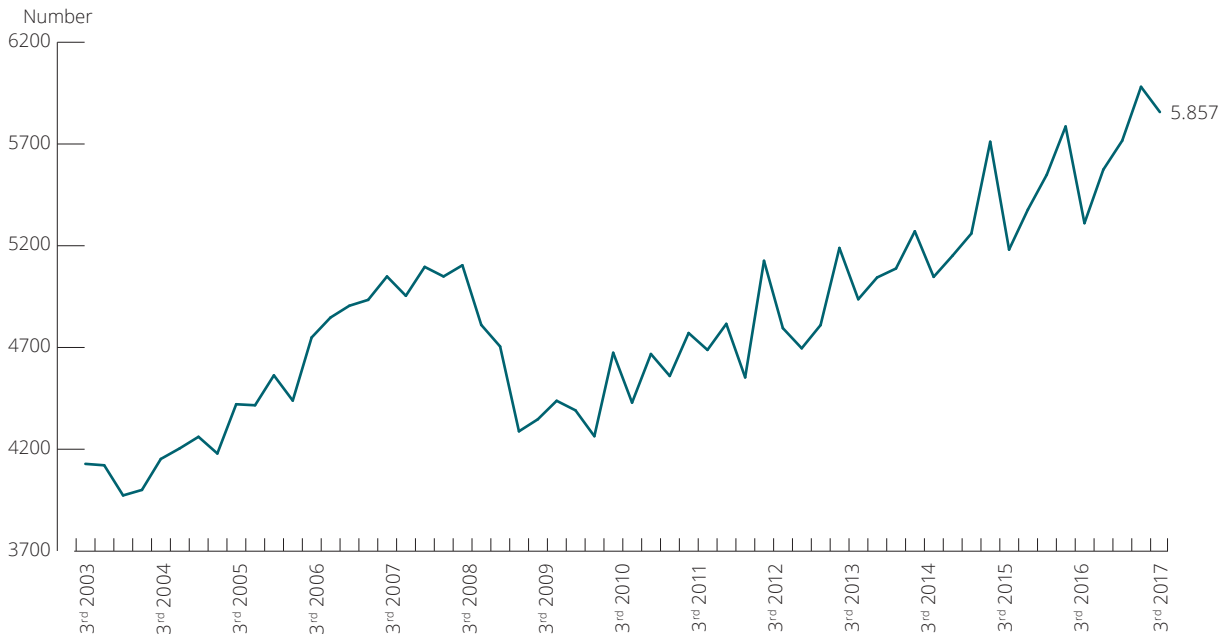
South Jutlandapproximately 200 vehicles per direction per day
Øresundapproximately 140 vehicles per direction per day
Fehmarnapproximately 210 vehicles per direction per day

GROWTH IN THE NUMBER OF TRUCKS PER DAY PER DIRECTION IN PER CENT SINCE THIRD QUARTER 2016:

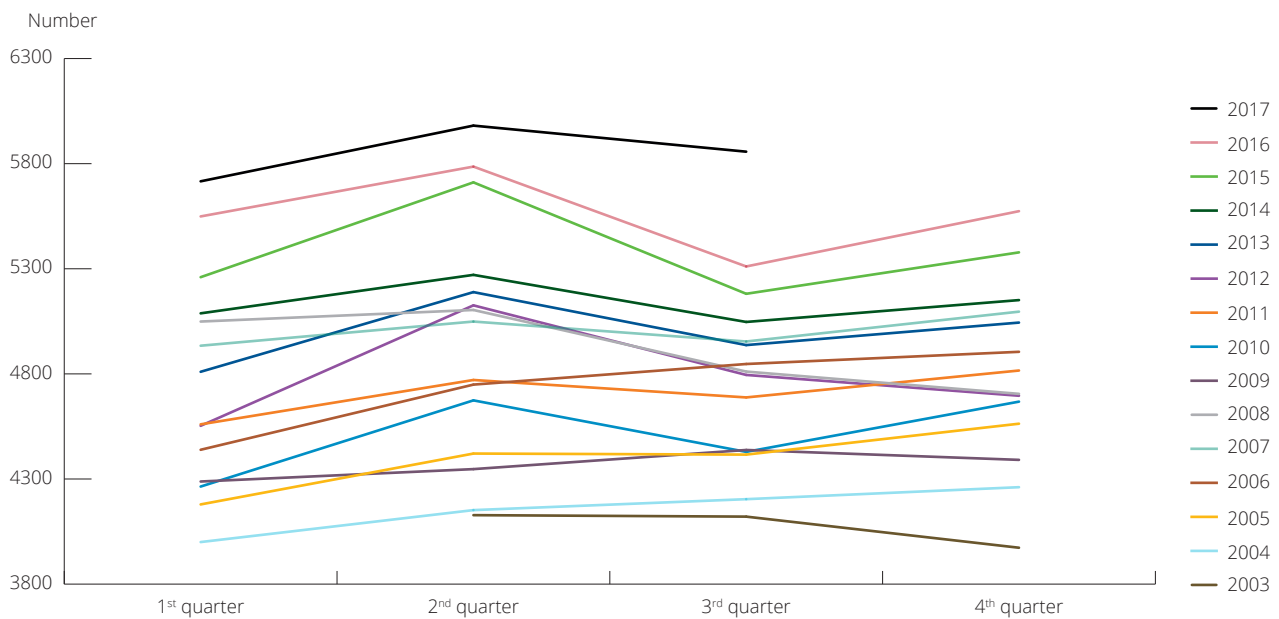
South Jutlandapproximately 6 per cent increase
Øresundapproximately 12 per cent increase
Fehmarnapproximately 26 per cent increase

ITD'S BORDER CENSUS

► Trucks per day across the borders in South Jutland, Fehmarn Belt and Øresund towards Denmark



► Number of trucks towards Denmark across borders in South Jutland, Øresund and Fehmarn Belt. Number of trucks per day



Note: Figures from South Jutland, Scandlines and HH Ferries without the Øresund Bridge and the Kattegat.

Border Census 3rd quarter 2017 - GB | VAT 40990917

► Wanting more material regards the ITD Border Census, please contact:



Morten Jacobsen
 Head of Communication
 mja@itd.dk
 M: +45 6020 8690



Lyren 1 | DK-6330 Padborg
 T: +45 7467 1233
 itd@itd.dk | www.itd.dk

Composition: transEco₂
Layout: ITD

© ITD, Association for the Danish road transport of goods
 Data, text, figures and/or tables may only be used by stating the source.